

## The Eggborough CCGT Project

PINS Ref: EN010081

### The Eggborough CCGT (Generating Station) Order

Land at and in the vicinity of the Eggborough Power Station site,  
near Selby, North Yorkshire, DN14 0BS

### Accompanied Site Inspection

Tuesday 21<sup>st</sup> November 2017

---



**Applicant: Eggborough Power Limited**  
**Date: November 2017**

---

## ACCOMPANIED SITE INSPECTION

**21 NOVEMBER 2017**

### Eggborough Power Station Plant Tour

#### Starting and finishing at Sports and Social Club

A. 400kV Substation

- Terminal point for the existing coal station to be utilised for the new CCGT plant.
- Up to 4 circuits utilising buried cables connecting the CCGT Plant.

B. Contractors facilities / Gas and Water Corridor

- Entrance road to remain for construction access and personnel
- Existing amenities will be available for the CCGT contractors as required
- Gas and water pipelines will cross the site boundary at this point.

C. CCGT Laydown area

- Existing strategic stock yard area and lagoon available during the CCGT construction period.
- After construction a large proportion of this area will be set aside for carbon capture readiness (CCR).
- Tree screening around site perimeter to be retained.

D. CCGT Construction Area (NE)

- Current coal stock yard viewed from North East corner. Approximate location of CCGT cooling towers.
- Section of rail infrastructure to be removed for construction.
- Position of new CCGT exhaust stacks are fixed and from this view point the location is front of the lighting tower.
- The area to the east of the existing coal handling facilities provides sufficient area for 3 CCGT units and associated equipment.

E. CCGT Construction Area (SW)

- Current stock yard viewed from south west corner.
- Existing coal handling facilities is the site for the proposed peaking and black start plant and provide an route for the underground high voltage cables to the sub station.
- Existing access road from A19 to coal stock yard will made available for abnormal loads during construction.

## Eggborough CCGT Off-Site Locations

### Gas and Cooling Water Infrastructure

#### F. Above Ground Installation (AGI)

- Connection point to main gas pipeline (NTS, National Transmission System).
- 2 adjacent compounds for EPL and National Grid.
- Located west side of West Lane, location chosen to avoid flood plane.
- Gas pipeline heads south east towards A19.

#### G. View Point from A19

- Gas pipeline will be installed under the A19 using horizontal directional drilling techniques avoiding the need for road closure.
- Gas pipelines turns south at the point towards River Aire and CCGT site.

#### H. View Point from Milfield Road

- Gas pipe crosses road and heads south to river crossing.
- Gas pipeline will be installed under the River Aire and embankments using horizontal directional drilling techniques.

#### I. Cooling Water Abstraction Point

- Water is abstracted at this point and is supplied to the cooling towers.
- A Cofferdam will be installed approx 7 meters in to the river, this enables modification works to be carried out to the cooling water intake structures.
- Existing structure will be adapted for new screening and pumping equipment.
- The new cooling water pipework will follow the existing pipeline route towards the CCGT plant.

#### J. Returns to River Water Point

- Utilising existing concrete outfall structure for cooling and process water returns to rivers.
- Pipe run initially follows the same route as the gas pipeline before turning east to the existing outfall structure.

#### K. View Point from Wand Lane

- Gas and Water lines corridor crosses main site perimeter.

#### L. A19 Abstraction Borehole

- Abstraction point for CCGT process water.
- Utilising existing coal station abstraction point.

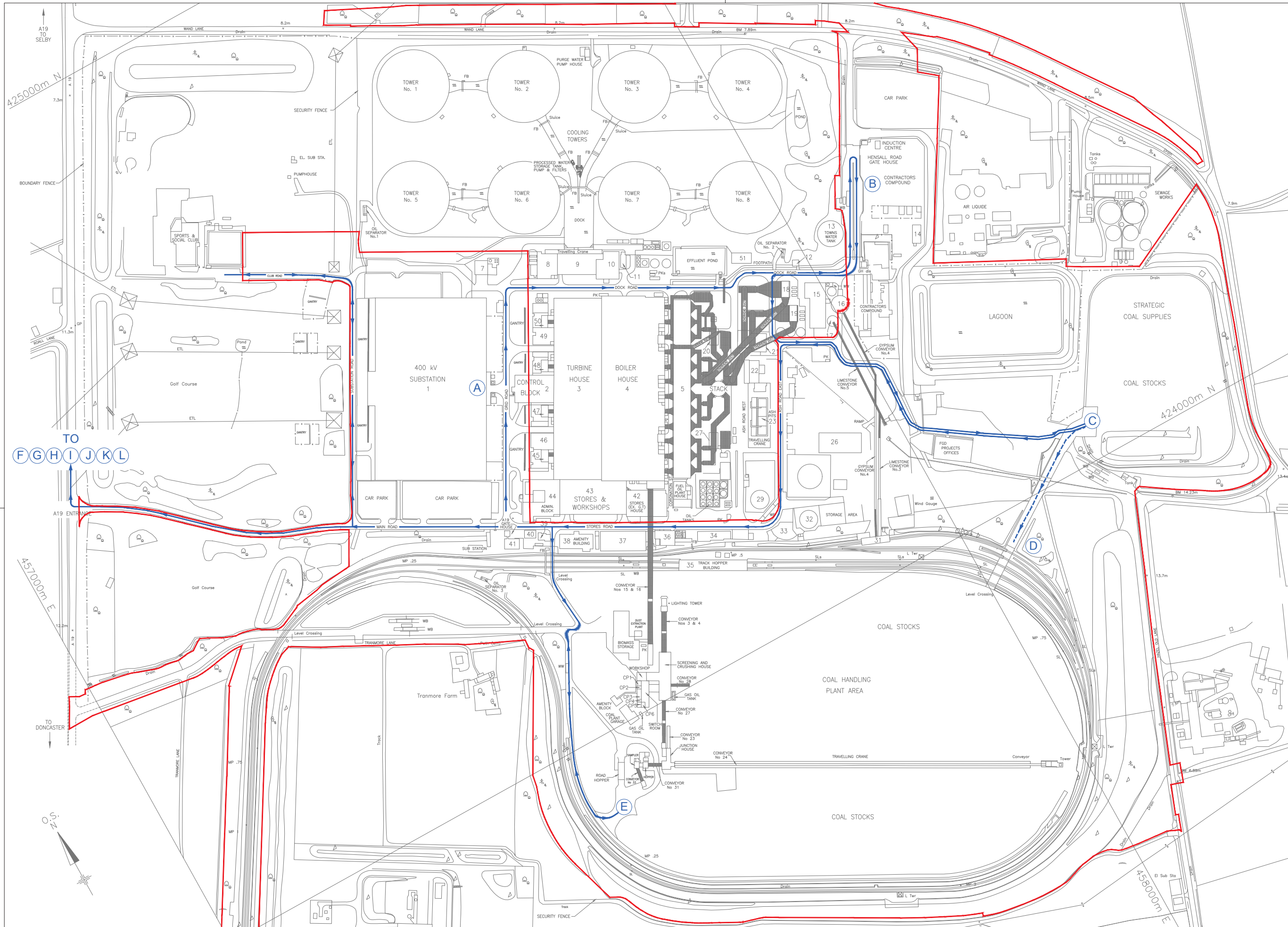
## Documents

1. Location Plan
2. Power Station Tour Route
3. Gas Pipeline Tour Route
4. Indicative Generating Station Plans and Elevations

**Document 1 - Location Plan**



**Document 2 - Power Station Tour Route**



**BUILDINGS SCHEDULE FOR EGGBOROUGH**

1. 400 kV. SUBSTATION
2. CONTROL BLOCK
3. TURBINE HOUSE
4. BOILER HOUSE
5. PRECIPITATORS
6. CHIMNEY
7. HYDROGEN COMPOUND
8. CHLORINATION PLANT HOUSE
9. COOLING WATER PUMPHOUSE
10. WATER TREATMENT PLANT HOUSE
11. WTP SETTLEMENT TANK
12. TOWNS WATER PUMPHOUSE
13. TOWNS WATER TANK (COVERED)
14. CONTRACTORS AMENITY BLOCK - HENSALL ROAD
15. FGD - WASTE WATER TREATMENT PLANT
16. FGD - GYPSUM SILO
17. FGD - LIMESTONE SILO
18. FGD - ABSORBER 3
19. FGD - ABSORBER 4
20. UNIT 3 & 4 PRECIPITATOR COMPRESSOR HOUSE
21. ASH PLANT - LYTAG HOUSE
22. ASH PLANT - ASH PUMPHOUSE
23. ASH PLANT - ASH PITS A-D
24. L.I.F. CENTRE AND NOREC
25. TURBINE SUPPORT GROUP WORKSHOP
26. HEAVY STORES
27. UNIT 1 & 2 PRECIPITATOR COMPRESSOR HOUSE
28. NO LONGER IN USE
29. HEAVY FUEL OIL TANK No.8
30. GAS OIL TANK No.9
31. FGD - TRACK HOPPER HOUSE LIMESTONE/GYPSUM
32. HEAVY FUEL OIL TANK No.9
33. WASTE MANAGEMENT COMPOUND
34. FIRE STATION - FUEL & SECONDARY PRODUCTS - COAL PLANT CONTROL ROOM - FGD PERMIT OFFICE
35. TRACK HOPPER BUILDING
36. CREASE STORE
37. MEDIUM STORES
38. AMENITY BUILDING
39. OCCUPATIONAL HEALTH CENTRE
40. SAFETY CENTRE
41. A19 GATE HOUSE AND SECURITY CENTRE
42. GAS TURBINE HOUSE
43. STORES & WORKSHOP
44. ADMINISTRATION BLOCK
45. 22/400kV. GENERATOR TRANSFORMER 1
46. 400/11kV. STATION TRANSFORMER 1
47. 22/400kV. GENERATOR TRANSFORMER 2
48. 22/400kV. GENERATOR TRANSFORMER 3
49. 400/11kV. STATION TRANSFORMER 2
50. 22/400kV. GENERATOR TRANSFORMER 4
51. OUTAGE CONTROL CENTRE

- WB. WEIGHBRIDGE
- WW. WHEEL WASH
- FB. FOOTBRIDGE
- PK. PORTACABIN
- dis. DISUSED

- SECURITY FENCE
- - - BOUNDARY FENCE
- OVERHEAD DETAIL
- DCO APPLICATION SITE

- PINS TOUR ROUTE
- VEHICLE ROUTE
- - - WALKING ROUTE

- A** 400kV SUBSTATION
- B** CONTRACTORS FACILITIES/GAS & WATER CORRIDOR
- C** CCGT LAYDOWN AREA
- D** CCGT CONSTRUCTION AREA (NE)
- E** CCGT CONSTRUCTION AREA (SW)
- F** ABOVE GROUND INSTALLATION (AGI)
- G** VIEW POINT FROM A19
- H** VIEW POINT FROM MILFIELD ROAD
- I** COOLING WATER ABSTRACTION POINT
- J** RETURNS TO RIVER WATER POINT
- K** VIEW POINT FROM WAND LANE
- L** A19 ABSTRACTION BOREHOLE

FOR EGGBOROUGH POWER STATION  
STATION LAYOUT DRAWING SEE 067/01/04/227

SCALE 1:1,500

© EGGBOROUGH POWER LTD. EGGBOROUGH POWER LTD RETAIN THE COPYRIGHT IN THIS DRAWING & RESERVE ALL RIGHTS OF MANUFACTURE & DESIGN DERIVING THEREFROM. THIS DRAWING MAY NOT BE REPRODUCED OR COMMUNICATED OR HARD COPY TO A THIRD PARTY WITHOUT PRIOR WRITTEN CONSENT BY EGGBOROUGH POWER LTD & IS TO BE RETURNED ON REQUEST. THE USE OF THE DRAWING IS RESTRICTED TO THE PURPOSE AS DEFINED ON THIS DRAWING & IN RELATIONSHIP TO THE PURPOSE DEFINED OR TO THE SINGLE INSTALLATION FOR WHICH IT HAS BEEN SUPPLIED.

**Eggborough**  
Power Ltd

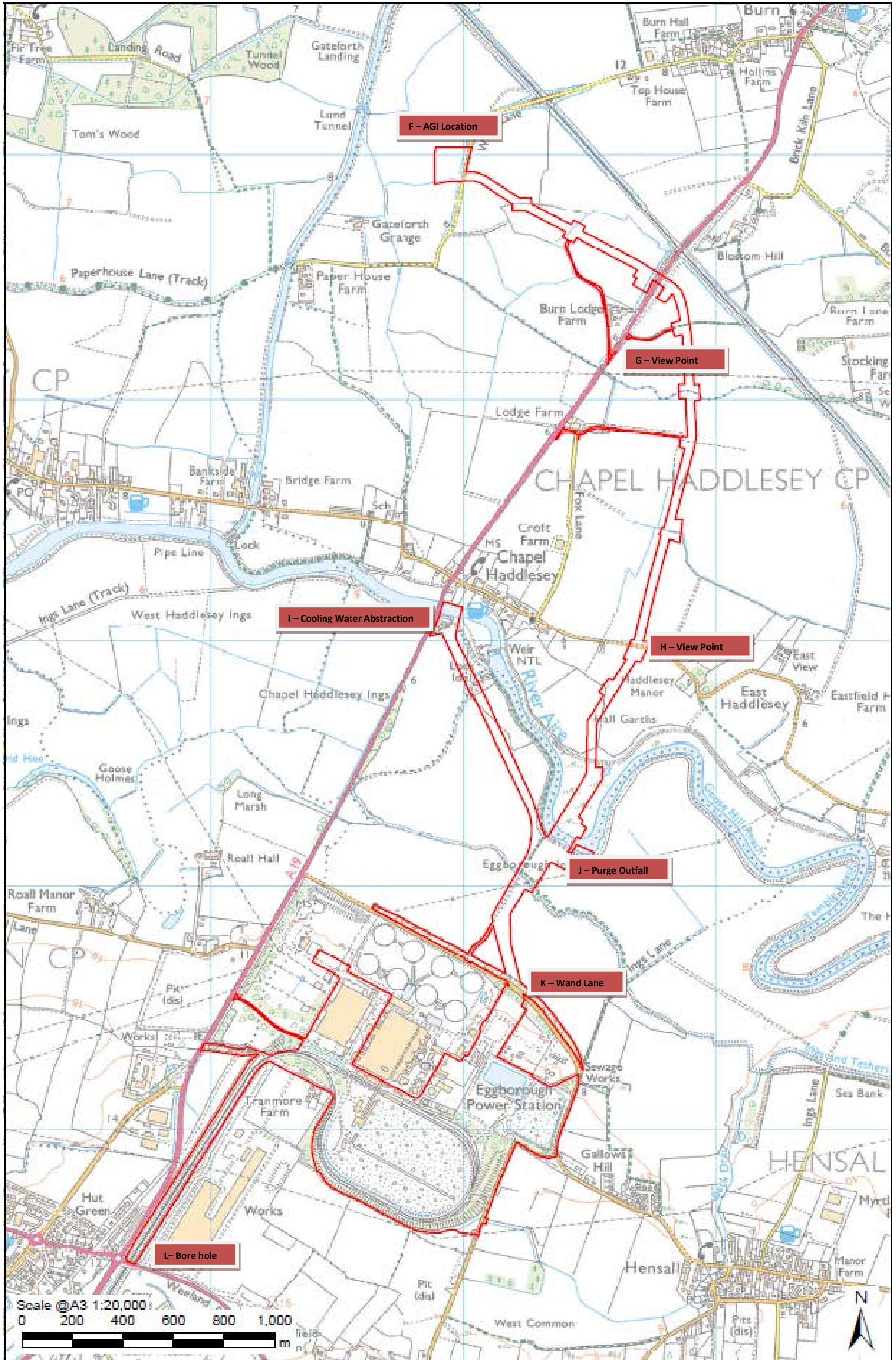
REDRAWN /DATE	MGV
TRACED /DATE	07/11/17
CHECKED /DATE	
SCALE	1:1500

EGGBOROUGH POWER STATION  
PINS TOUR ROUTE NOVEMBER 2017

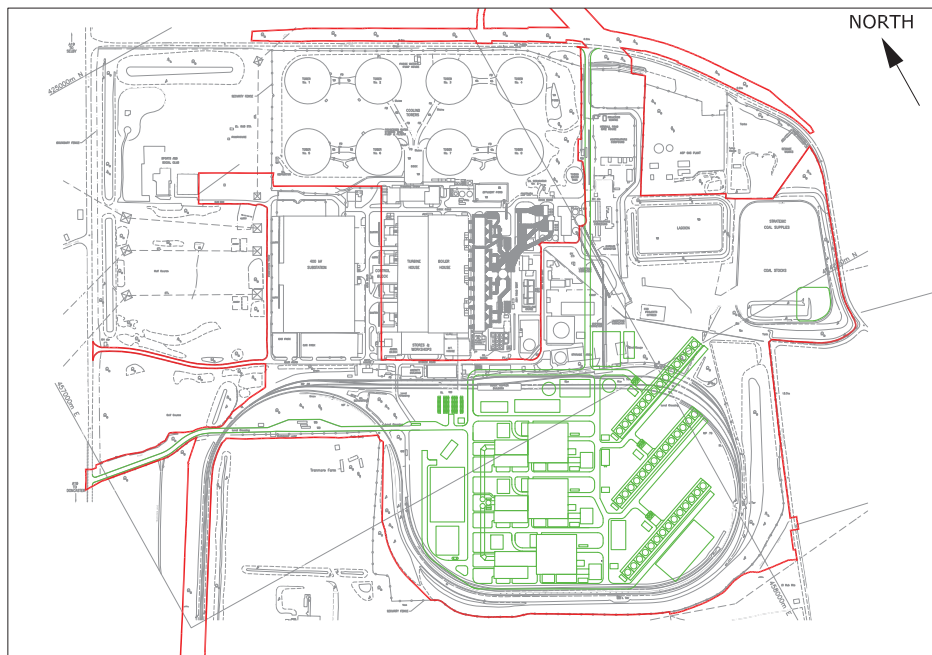
DRAWING NUMBER 067/01/04/\*\*\*



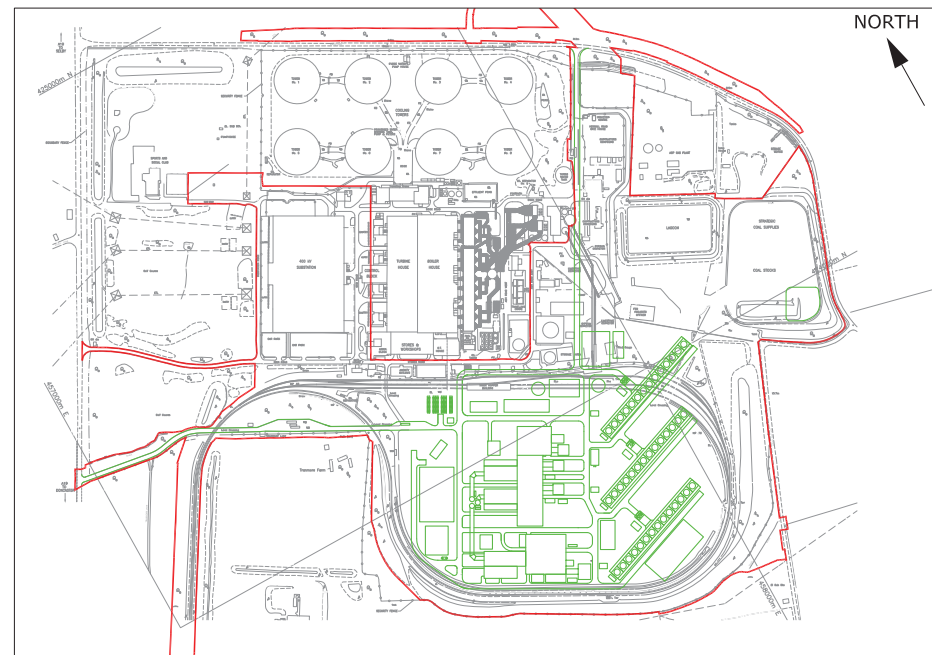
**Document 3 - Gas Pipeline Tour Route**



**Document 4 - Indicative Generating Station Plans and Elevations**



SHEET 1 of 6 - PLAN VIEW SINGLE SHAFT



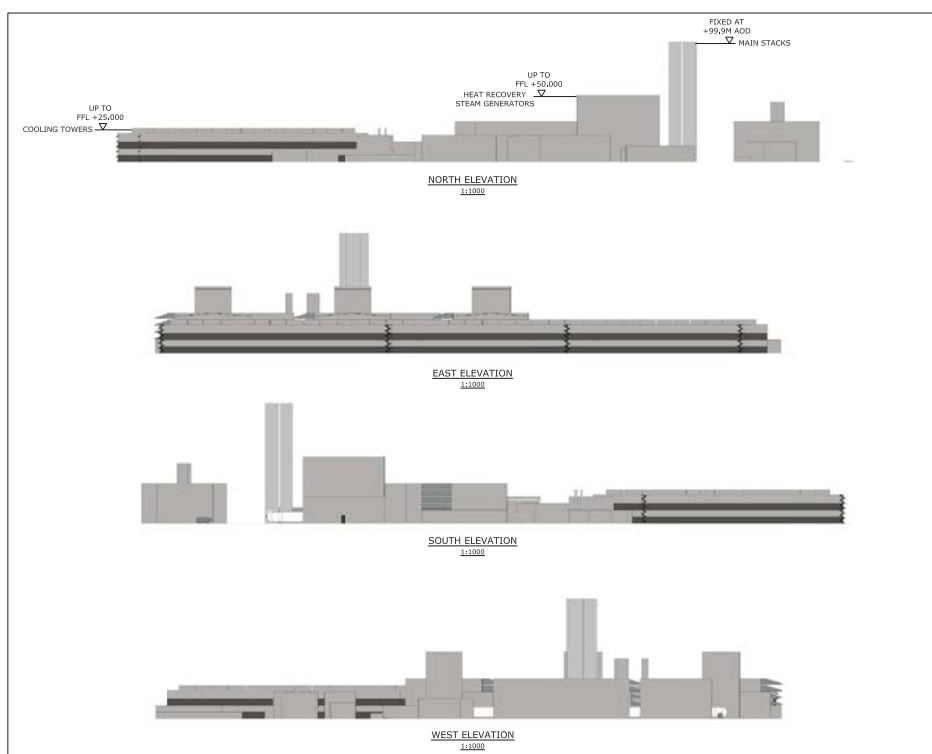
SHEET 4 of 6 - PLAN VIEW MULTI SHAFT



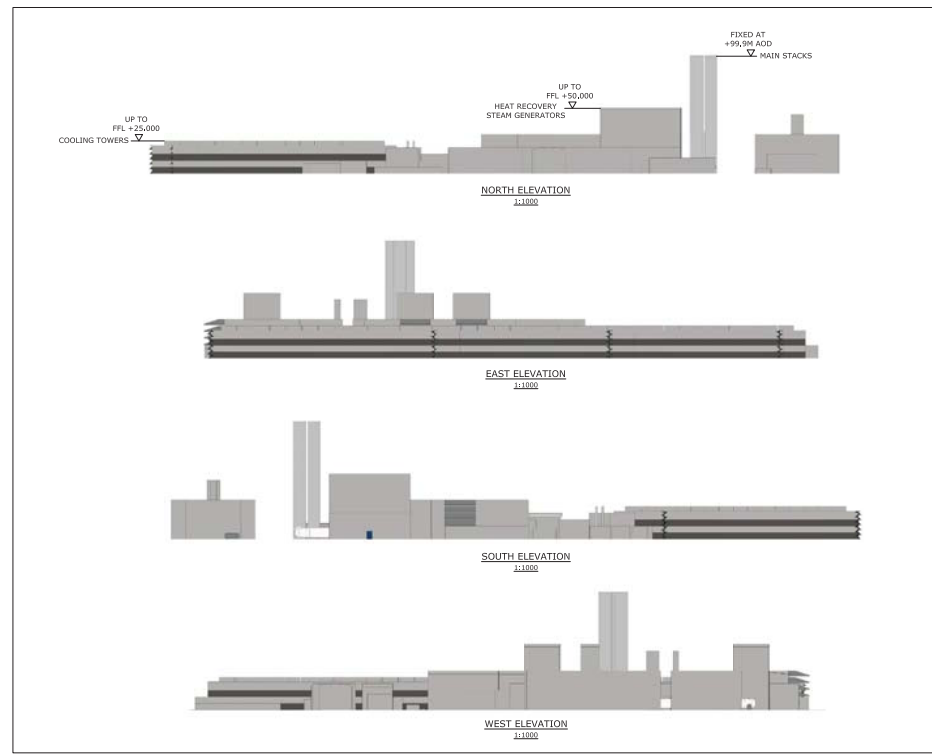
SHEET 2 of 6 - AERIAL VIEW SINGLE SHAFT



SHEET 5 of 6 - AERIAL VIEW MULTI SHAFT



SHEET 3 of 6 - ELEVATIONS SINGLE SHAFT



SHEET 6 of 6 - ELEVATIONS MULTI SHAFT

ALL INFORMATION ON THIS DRAWING IS INDICATIVE ONLY AND MAY BE SUBJECT TO FURTHER DESIGN DEVELOPMENT.  
DO NOT SCALE

NOTES:  
KEY  
THE ORDER LIMITS

THE EGGBOROUGH POWER CCGT (GENERATING STATION) ORDER  
INFRASTRUCTURE PLANNING (APPLICATIONS: PRESCRIBED FORMS AND PROCEDURE) REGULATIONS 2009 - REGULATION 5(2)(a)

REV. PRELIMINARY AG BC 18.05.17  
REV. DETAILS OF REVISION DRAWN (DWG) DATE  
**FICHTNER**  
CONSULTING ENGINEERS LIMITED  
Kingsgate, Wellington Road North, Stockport, Cheshire, SK16 1LW, UK  
Tel: 0161 476 0032  
Web: www.fichtner.co.uk

CLIENT: EGGBOROUGH POWER LIMITED  
SITE: EGGBOROUGH  
PROJECT: EGGBOROUGH DCO FOR CCGT PLANT  
TITLE: APPLICATION DOCUMENT REFERENCE No. 4-6 INDICATIVE GENERATING STATION PLANS & ELEVATIONS

KEY PLAN	
DRAWING STATUS:	PRELIMINARY
DRAWN BY:	AG DATE: 15.05.17
CHECKED BY:	BC DATE: 15.05.17
FILE NAME:	2095-054-01_0200
OFFICE OF ISSUE:	STOCKPORT
SHEET SIZE:	A0 SCALE: 1:15000
DRAWING No.:	2095-054
REVISION No.:	R1

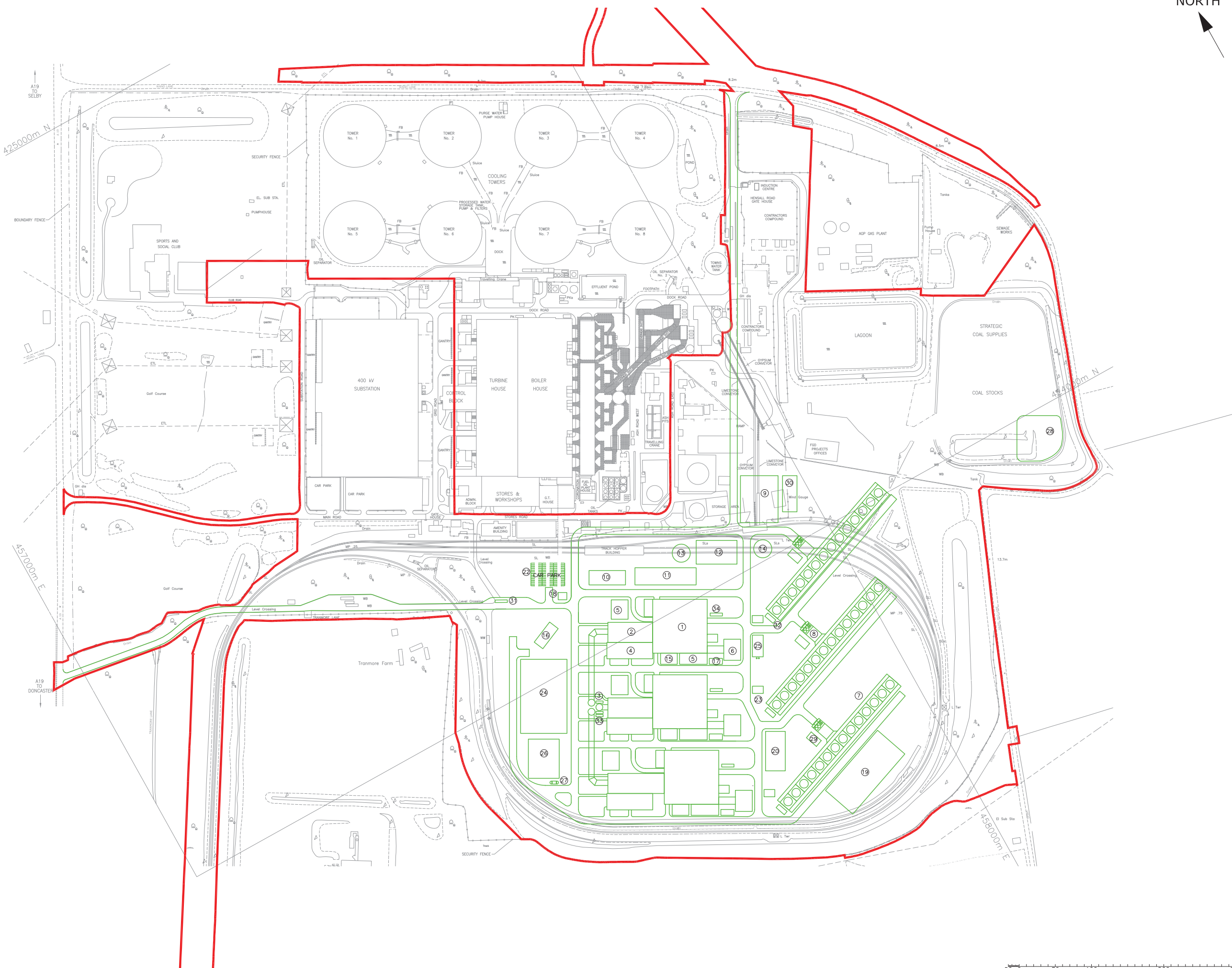


ALL INFORMATION ON THIS DRAWING IS INDICATIVE ONLY, AND MAY BE SUBJECT TO FURTHER DESIGN DEVELOPMENT.

DO NOT SCALE

PLANT DESCRIPTION	
1	TURBINE HALL
2	HEAT RECOVERY STEAM GENERATORS
3	COMBINED CYCLE GAS TURBINE STACKS
4	FEEDWATER PUMP BUILDING
5	ELECTRICAL BUILDING
6	GENERATOR TRANSFORMER
7	COOLING TOWERS
8	COOLING WATER PUMPS
9	GAS RECEPTION FACILITY
10	WORKSHOP & STORES
11	ELECTRICAL, CONTROL & ADMINISTRATION BUILDING
12	WATER TREATMENT PLANT, FIRE PUMPS & LABORATORY
13	RAW & FIRE WATER TANK
14	DEMINERALISED WATER TANK
15	GAS TURBINE AIR INTAKE FILTER
16	GAS INSULATED SWITCHGEAR ELECTRICAL SUBSTATION
17	DIESEL GENERATORS
18	GATEHOUSE
19	FIREWATER & STORMWATER RETENTION BASINS
20	WASTE WATER TREATMENT PLANT
21	NOT USED
22	CAR PARKING
23	CLOSED CIRCUIT COOLING WATER COOLERS
24	PEAKING PLANT
25	AUXILIARY BOILERS
26	BLACK START PLANT
27	DIESEL TANK FOR BLACK START DIESEL GENERATOR
28	INFILTRATION/ATTENUATION AREA FOR SURFACE WATER DRAINS
29	COOLING WATER DOSING & SAMPLING PLANT
30	GAS COMPRESSION EQUIPMENT
31	WEIGHBRIDGE
32	COOLING WATER ELECTRICAL BUILDING
33	CONTINUOUS EMISSIONS MONITORING SYSTEM CONTAINER
34	GAS BOTTLE STORAGE

KEY  
 THE ORDER LIMITS



THE EGGBOROUGH POWER CCGT (GENERATING STATION) ORDER  
 INFRASTRUCTURE PLANNING  
 (APPLICATIONS: PRESCRIBED FORMS AND PROCEDURE)  
 REGULATIONS 2009 - REGULATION 5(2)(o)

REV.	DETAILS OF REVISION	AO	BC	18.05.17	DATE
R1	PRELIMINARY				

**FICHTNER**  
 CONSULTING ENGINEERS LIMITED  
 Kingsgate, Wellington Road North,  
 Stockport, Cheshire, SK4 1LW, UK  
 Tel: 0161 476 0032  
 Website: www.fichtner.co.uk

CLIENT: EGGBOROUGH POWER LIMITED  
 SITE: EGGBOROUGH  
 PROJECT: EGGBOROUGH CCGT PLANT  
 TITLE: APPLICATION DOCUMENT REFERENCE No. 4,6  
 INDICATIVE GENERATING STATION PLANS  
 & ELEVATIONS

SHEET 1 of 6 - PLAN VIEW SINGLE SHAFT

DRAWING STATUS:	PRELIMINARY
DRAWN BY:	AO DATE: 15.05.17
CHECKED BY:	BC DATE: 15.05.17
FILENAME:	2095-054-R1.DWG
OFFICE OF ISSUE:	STOCKPORT
SHEET SIZE:	A1 SCALE: 1:2500
DRAWING No.:	2095-054
REVISION:	R1





ALL INFORMATION ON THIS DRAWING IS INDICATIVE ONLY, AND MAY BE SUBJECT TO FURTHER DESIGN DEVELOPMENT.  
DO NOT SCALE

THE EGGBOROUGH POWER CCGT (GENERATING STATION) ORDER  
INFRASTRUCTURE PLANNING  
(APPLICATIONS: PRESCRIBED FORMS AND PROCEDURE)  
REGULATIONS 2009 - REGULATION 5(2)(o)

REV.	DETAILS OF REVISION	AO	BC	DATE
R1	PRELIMINARY	AO	BC	18.03.17

**FICHTNER**  
CONSULTING ENGINEERS LIMITED  
Kingsgate, Wellington Road North,  
Stockport, Cheshire, SK4 1LW, UK  
Tel: 0161 476 0032  
Website: www.fichtner.co.uk

CLIENT: EGGBOROUGH POWER LIMITED

SITE: EGGBOROUGH

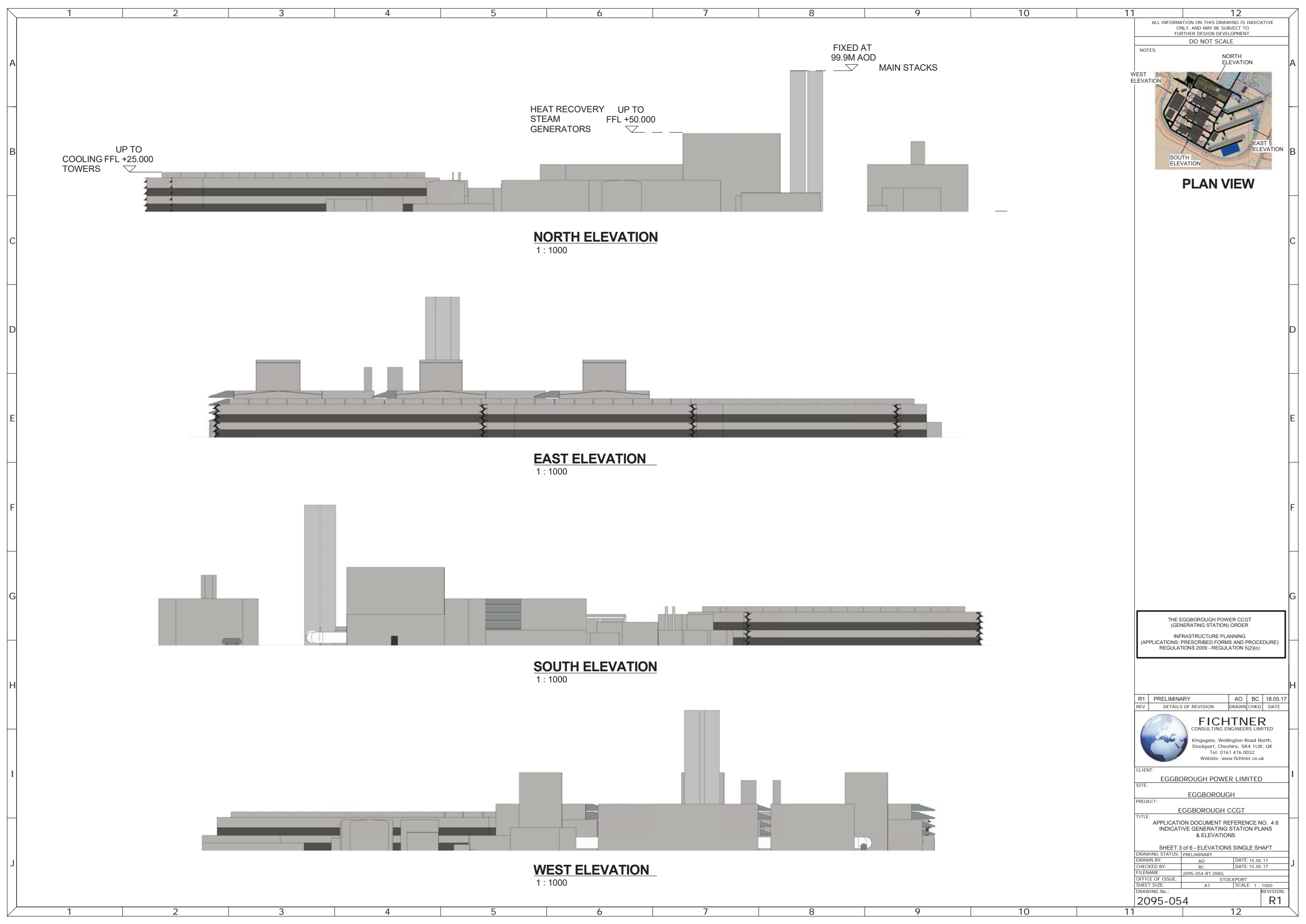
PROJECT: EGGBOROUGH CCGT PLANT

TITLE: APPLICATION DOCUMENT REFERENCE No. 4.6  
INDICATIVE GENERATING STATION PLANS  
& ELEVATIONS

SHEET 2 of 6 - AERIAL VIEW SINGLE SHAFT

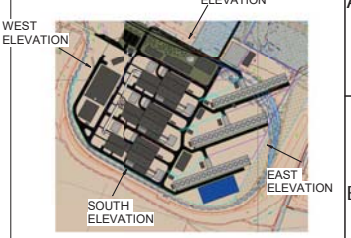
DRAWN BY:	AO	DATE:	5.05.17
CHECKED BY:	BC	DATE:	15.05.17
FILENAME:	2095-054-R1.DWG		
OFFICE OF ISSUE:	STOCKPORT		
SHEET SIZE:	A1	SCALE:	1:2500

DRAWING No.: 2095-054 REVISION: R1



ALL INFORMATION ON THIS DRAWING IS INDICATIVE ONLY, AND MAY BE SUBJECT TO FURTHER DESIGN DEVELOPMENT.  
DO NOT SCALE

NOTES:



**PLAN VIEW**

**NORTH ELEVATION**  
1 : 1000

**EAST ELEVATION**  
1 : 1000

**SOUTH ELEVATION**  
1 : 1000

**WEST ELEVATION**  
1 : 1000

THE EGGBOROUGH POWER CCGT (GENERATING STATION) ORDER  
INFRASTRUCTURE PLANNING  
(APPLICATIONS: PRESCRIBED FORMS AND PROCEDURE)  
REGULATIONS 2009 - REGULATION 5(2)(o)

R1	PRELIMINARY	AO	BC	18.05.17
REV.	DETAILS OF REVISION	DRAWN	CHKD	DATE



CLIENT: EGGBOROUGH POWER LIMITED

SITE: EGGBOROUGH

PROJECT: EGGBOROUGH CCGT

TITLE: APPLICATION DOCUMENT REFERENCE NO. 4.6  
INDICATIVE GENERATING STATION PLANS  
& ELEVATIONS

SHEET 3 of 6 - ELEVATIONS SINGLE SHAFT

DRAWING STATUS:	PRELIMINARY	DATE:	15.05.17
DRAWN BY:	AO	CHECKED BY:	BC
FILENAME:	2095-054-R1.DWG	DATE:	15.05.17
OFFICE OF ISSUE:	A1 STOCKPORT	SHEET SIZE:	A1
DRAWING No.:	2095-054	SCALE:	1 : 1000
REVISION:	R1		

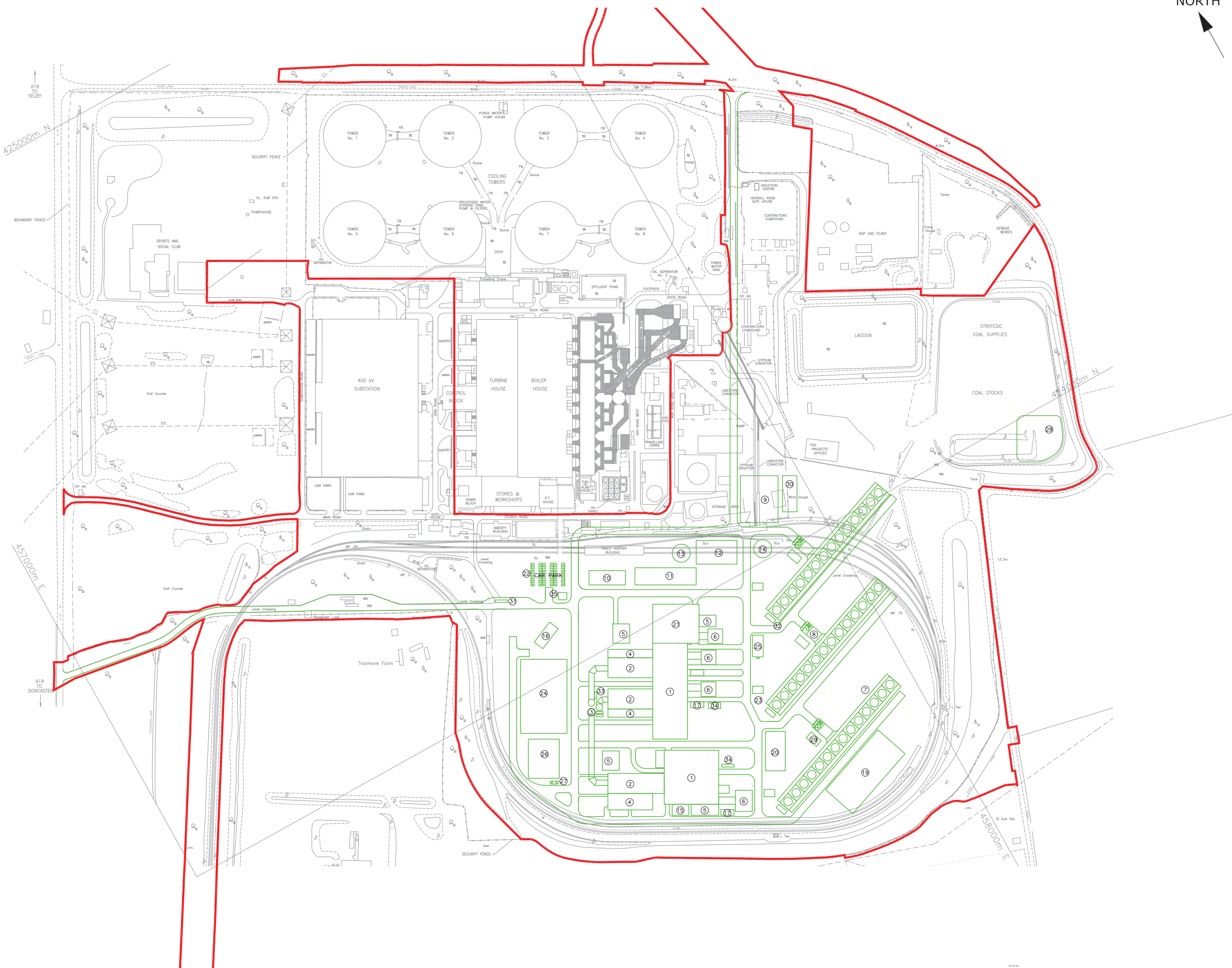
NORTH

ALL INFORMATION ON THIS DRAWING IS INDICATIVE ONLY, AND MAY BE SUBJECT TO FURTHER DESIGN DEVELOPMENT.

DO NOT SCALE

PLANT DESCRIPTION	
1	TURBINE HALL
2	HEAT RECOVERY STEAM GENERATORS
3	COMBINED CYCLE GAS TURBINE STACKS
4	FEEDWATER PUMP BUILDING
5	ELECTRICAL BUILDING
6	GENERATOR TRANSFORMER
7	COOLING TOWERS
8	COOLING WATER PUMPS
9	GAS RECEPTION FACILITY
10	WORKSHOP & STORES
11	ELECTRICAL, CONTROL & ADMINISTRATION BUILDING
12	WATER TREATMENT PLANT, FIRE PUMPS & LABORATORY
13	RAW & FIRE WATER TANK
14	DEMINERALISED WATER TANK
15	GAS TURBINE AIR INTAKE FILTER
16	GAS INSULATED SWITCHGEAR ELECTRICAL SUBSTATION
17	DIESEL GENERATORS
18	GATEHOUSE
19	FIREWATER & STORMWATER RETENTION BASINS
20	WASTE WATER TREATMENT PLANT
21	STEAM TURBINE HALL
22	CAR PARKING
23	CLOSED CIRCUIT COOLING WATER COOLERS
24	PEAKING PLANT
25	AUXILIARY BOILERS
26	BLACK START PLANT
27	DIESEL TANK FOR BLACK START DIESEL GENERATOR
28	INFILTRATION/ATTENUATION AREA FOR SURFACE WATER DRAINS
29	COOLING WATER DOSING & SAMPLING PLANT
30	GAS COMPRESSION EQUIPMENT
31	WEIGHBRIDGE
32	COOLING WATER ELECTRICAL BUILDING
33	CONTINUOUS EMISSIONS MONITORING SYSTEM CONTAINER
34	GAS BOTTLE STORAGE

KEY  
— THE ORDER LIMITS



THE EGGBOROUGH POWER CCGT (GENERATING STATION) ORDER  
 INFRASTRUCTURE PLANNING  
 (APPLICATIONS: PRESCRIBED FORMS AND PROCEDURE)  
 REGULATIONS 2009 - REGULATION 5(2)(o)

R1	PRELIMINARY	AO	BC	18.05.17
REV.	DETAILS OF REVISION	DRAWN	CHKD	DATE



CLIENT: EGGBOROUGH POWER LIMITED  
 SITE: EGGBOROUGH  
 PROJECT: EGGBOROUGH CCGT PLANT  
 TITLE: APPLICATION DOCUMENT REFERENCE No. 4,6  
 INDICATIVE GENERATING STATION PLANS  
 & ELEVATIONS

SHEET 4 of 6 - PLAN VIEW MULTI SHAFT			
DRAWING STATUS:	PRELIMINARY	DATE:	15.05.17
DRAWN BY:	AO	CHECKED BY:	BC
FILENAME:	2095-054-R1.DWG	OFFICE OF ISSUE:	STOCKPORT
SHEET SIZE:	A1	SCALE:	1:2500
DRAWING No.:	2095-054	REVISION:	R1





ALL INFORMATION ON THIS DRAWING IS INDICATIVE ONLY, AND MAY BE SUBJECT TO FURTHER DESIGN DEVELOPMENT.  
DO NOT SCALE

THE EGGBOROUGH POWER CCGT (GENERATING STATION) ORDER  
INFRASTRUCTURE PLANNING  
(APPLICATIONS: PRESCRIBED FORMS AND PROCEDURE)  
REGULATIONS 2009 - REGULATION 5(2)(o)

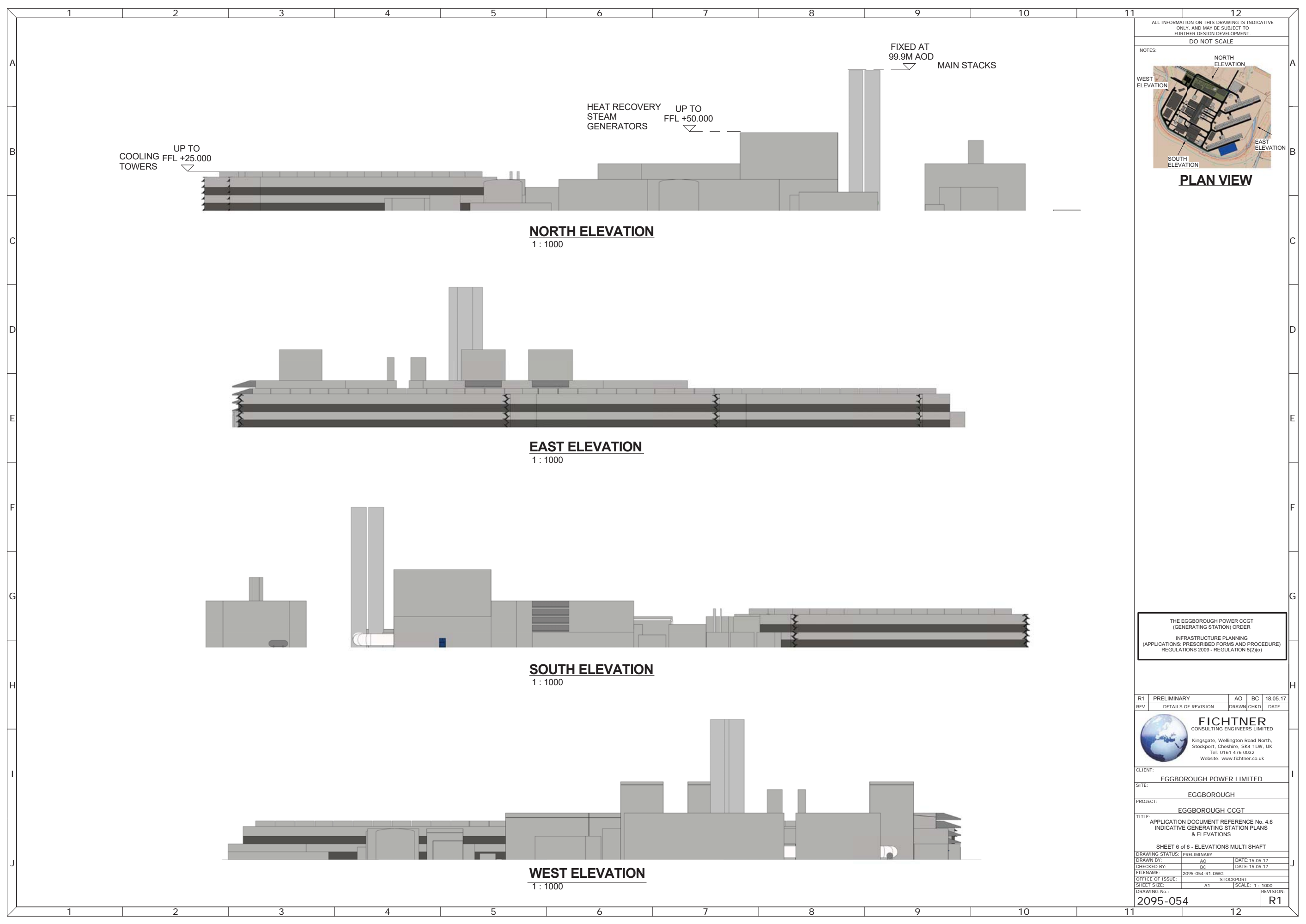
REV.	DETAILS OF REVISION	AO	BC	DATE
R1	PRELIMINARY	AO	BC	18.05.17

**FICHTNER**  
CONSULTING ENGINEERS LIMITED  
Kingsgate, Wellington Road North,  
Stockport, Cheshire, SK4 1LW, UK  
Tel: 0161 476 0032  
Website: www.fichtner.co.uk

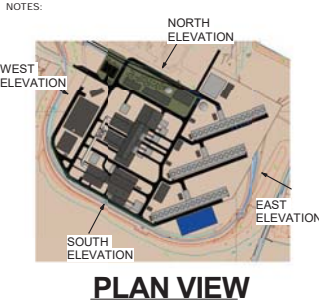
CLIENT: EGGBOROUGH POWER LIMITED  
SITE: EGGBOROUGH  
PROJECT: EGGBOROUGH CCGT PLANT  
TITLE: APPLICATION DOCUMENT REFERENCE No. 4,6  
INDICATIVE GENERATING STATION PLANS  
& ELEVATIONS

SHEET 5 of 6 - AERIAL VIEW MULTI SHAFT

DRAWING STATUS:	PRELIMINARY	
DRAWN BY:	AO	DATE: 15.05.17
CHECKED BY:	BC	DATE: 15.05.17
FILENAME:	2095-054-R1.DWG	
OFFICE OF ISSUE:	STOCKPORT	
SHEET SIZE:	A1	SCALE: 1:2500
DRAWING No.:	2095-054	REVISION: R1



ALL INFORMATION ON THIS DRAWING IS INDICATIVE ONLY, AND MAY BE SUBJECT TO FURTHER DESIGN DEVELOPMENT.  
DO NOT SCALE



**NORTH ELEVATION**  
1 : 1000

**EAST ELEVATION**  
1 : 1000

**SOUTH ELEVATION**  
1 : 1000

**WEST ELEVATION**  
1 : 1000

THE EGGBOROUGH POWER CCGT  
(GENERATING STATION) ORDER  
INFRASTRUCTURE PLANNING  
(APPLICATIONS: PRESCRIBED FORMS AND PROCEDURE)  
REGULATIONS 2009 - REGULATION 5(2)(e)

R1	PRELIMINARY	AO	BC	18.05.17
REV.	DETAILS OF REVISION	DRAWN	CHKD	DATE



CLIENT: EGGBOROUGH POWER LIMITED

SITE: EGGBOROUGH

PROJECT: EGGBOROUGH CCGT

TITLE: APPLICATION DOCUMENT REFERENCE No. 4.6  
INDICATIVE GENERATING STATION PLANS  
& ELEVATIONS

SHEET 6 of 6 - ELEVATIONS MULTI SHAFT

DRAWING STATUS:	PRELIMINARY
DRAWN BY:	AO
CHECKED BY:	BC
FILENAME:	2095-054-R1.DWG
OFFICE OF ISSUE:	A1 STOCKPORT
SHEET SIZE:	A1
DRAWING No.:	2095-054
SCALE:	1 : 1000
REVISION:	R1