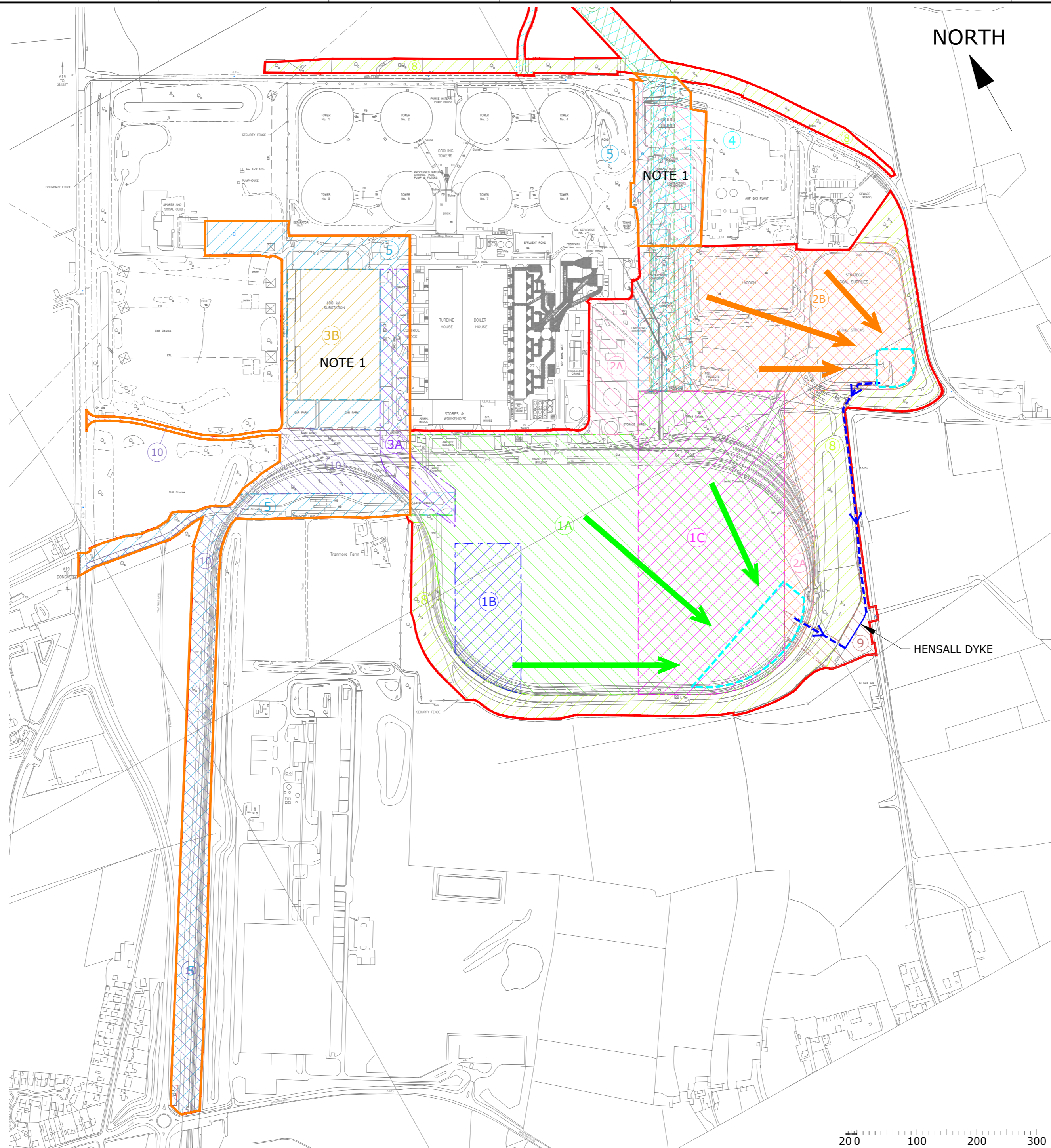


**APPENDIX 11 - DRAWING REF. NO. 2095-059R3**

- WORK No. 1**  
**THE ELECTRICITY GENERATING STATION**
- WORK No. 1A**
- COMBINED CYCLE GAS TURBINE PLANT
  - COMBINED CYCLE GAS TURBINE PLANT LIMITS OF DEVIATION
- WORK No. 1B**
- PEAKING PLANT & BLACK START PLANT
  - PEAKING PLANT & BLACK START PLANT LIMITS OF DEVIATION
- WORK No. 1C**
- COMBINED CYCLE GAS TURBINE PLANT COOLING INFRASTRUCTURE
  - COMBINED CYCLE GAS TURBINE PLANT COOLING INFRASTRUCTURE LIMITS OF DEVIATION
- WORK No. 2**  
**TEMPORARY CONSTRUCTION AND LAYDOWN AREA AND CARBON CAPTURE READINESS RESERVE SPACE**
- WORK No. 2A**
- TEMPORARY CONSTRUCTION AND LAYDOWN AREA
  - TEMPORARY CONSTRUCTION AND LAYDOWN AREA LIMITS OF DEVIATION
- WORK No. 2B**
- CARBON CAPTURE READINESS RESERVE SPACE
  - CARBON CAPTURE READINESS RESERVE SPACE LIMITS OF DEVIATION
- WORK No. 3 - ELECTRICAL CONNECTION WORKS**
- WORK No. 3A**
- 400kV UNDERGROUND ELECTRICAL CABLE WORKS TO NATIONAL GRID SUBSTATION
  - 400kV UNDERGROUND ELECTRICAL CABLE WORKS TO NATIONAL GRID SUBSTATION LIMITS OF DEVIATION
- WORK No. 3B**
- WORKS WITHIN THE EXISTING NATIONAL GRID SUBSTATION
  - WORKS WITHIN THE EXISTING NATIONAL GRID SUBSTATION LIMITS OF DEVIATION
- WORK No. 4**
- COOLING WATER CONNECTION WORKS
  - COOLING WATER CONNECTION WORKS LIMITS OF DEVIATION
- WORK No. 5**
- GROUNDWATER & TOWNS WATER SUPPLY CONNECTION WORKS
  - GROUNDWATER & TOWNS WATER SUPPLY CONNECTION WORKS LIMITS OF DEVIATION
- WORK No. 6**
- GAS SUPPLY PIPELINE CONNECTION WORKS
  - GAS SUPPLY PIPELINE CONNECTION WORKS LIMITS OF DEVIATION
- WORK No. 7**  
**THE ABOVE GROUND INSTALLATION**
- WORK No. 7A**
- COMPOUND FOR NATIONAL GRID'S APPARATUS
  - COMPOUND FOR NATIONAL GRID'S APPARATUS LIMITS OF DEVIATION
- WORK No. 7B**
- COMPOUND FOR THE UNDERTAKER'S APPARATUS
  - COMPOUND FOR THE UNDERTAKER'S APPARATUS LIMITS OF DEVIATION
- WORK No. 8**
- RETAINED LANDSCAPING
  - RETAINED LANDSCAPING LIMITS OF DEVIATION
- WORK No. 9**
- SURFACE WATER DRAINAGE CONNECTION TO HENSALL DYKE
  - SURFACE WATER DRAINAGE CONNECTION TO HENSALL DYKE LIMITS OF DEVIATION
- WORK No. 10**
- VEHICULAR, PEDESTRIAN AND CYCLE ACCESS WORKS AND RAIL INFRASTRUCTURE
  - VEHICULAR, PEDESTRIAN AND CYCLE ACCESS WORKS AND RAIL INFRASTRUCTURE LIMITS OF DEVIATION



ALL INFORMATION ON THIS DRAWING IS INDICATIVE ONLY, AND MAY BE SUBJECT TO FURTHER DESIGN DEVELOPMENT.

- DO NOT SCALE**
- NOTES**
- HIGHLIGHTED AREAS USE SURFACE WATER DRAINS THAT ARE PART OF THE EXISTING COAL POWER STATION DRAINAGE SYSTEMS. WATER FLOWS TO THE EXISTING ASH RESERVOIR AND IS PUMPED TO GALE COMMON ASH DISPOSAL SITE.
  - DRAINAGE VIA INFILTRATION WITHIN THE AGI SITE.
  - COMPRISES OF OF A BURIED GAS AND COOLING WATER PIPES WHICH WILL NOT INTRODUCE ADDITIONAL IMPERMEABLE SURFACE OR AFFECT EXISTING LAND DRAINAGE.

- KEY**
- THE ORDER LIMITS
  - INDICATIVE SURFACE WATER PIPELINE DISCHARGE ROUTE TO HENSALL DYKE
  - INDICATIVE LOCATIONS OF SURFACE WATER ATTENUATION PONDS
  - SURFACE WATER FROM LAYDOWN AREA
  - SURFACE WATER FROM CCGT PLANT

R3	PRELIMINARY	AO	KMB	25.10.17
R2	PRELIMINARY	AO	KMB	24.10.17
R1	PRELIMINARY	AO	KMB	09.10.17
REV.	DETAILS OF REVISION	DRAWN	CHKD	DATE

**FICHTNER**  
CONSULTING ENGINEERS LIMITED

Kingsgate, Wellington Road North,  
Stockport, Cheshire, SK4 1LW, UK  
Tel: 0161 476 0032  
Website: www.fichtner.co.uk

CLIENT: **EGGBOROUGH POWER LIMITED**

SITE: **EGGBOROUGH**

PROJECT: **EGGBOROUGH DCO FOR CCGT PLANT**

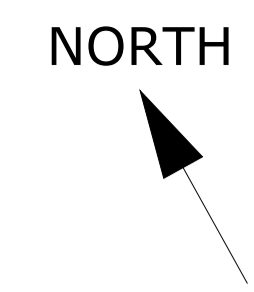
TITLE: **WORK NUMBERS AND SURFACE WATER DRAINAGE SYSTEM**

DRAWING STATUS:	PRELIMINARY	
DRAWN BY:	AO	DATE: 09.10.17
CHECKED BY:	KMB	DATE: 09.10.17
FILENAME:	2095-059-R3.DWG	
OFFICE OF ISSUE:	STOCKPORT	
SHEET SIZE:	A2	SCALE: 1:5000
DRAWING No.:	<b>2095-059</b>	REVISION: <b>R3</b>
	Sheet 1 of 2	

200 100 200 300  
**SCALE IN METRES**



- WORK No. 1**  
THE ELECTRICITY GENERATING STATION
- WORK No. 1A**
- COMBINED CYCLE GAS TURBINE PLANT
  - COMBINED CYCLE GAS TURBINE PLANT LIMITS OF DEVIATION
- WORK No. 1B**
- PEAKING PLANT & BLACK START PLANT
  - PEAKING PLANT & BLACK START PLANT LIMITS OF DEVIATION
- WORK No. 1C**
- COMBINED CYCLE GAS TURBINE PLANT COOLING INFRASTRUCTURE
  - COMBINED CYCLE GAS TURBINE PLANT COOLING INFRASTRUCTURE LIMITS OF DEVIATION
- WORK No. 2**  
TEMPORARY CONSTRUCTION AND LAYDOWN AREA AND CARBON CAPTURE READINESS RESERVE SPACE
- WORK No. 2A**
- TEMPORARY CONSTRUCTION AND LAYDOWN AREA
  - TEMPORARY CONSTRUCTION AND LAYDOWN AREA LIMITS OF DEVIATION
- WORK No. 2B**
- CARBON CAPTURE READINESS RESERVE SPACE
  - CARBON CAPTURE READINESS RESERVE SPACE LIMITS OF DEVIATION
- WORK No. 3 - ELECTRICAL CONNECTION WORKS**
- WORK No. 3A**
- 400kV UNDERGROUND ELECTRICAL CABLE WORKS TO NATIONAL GRID SUBSTATION
  - 400kV UNDERGROUND ELECTRICAL CABLE WORKS TO NATIONAL GRID SUBSTATION LIMITS OF DEVIATION
- WORK No. 3B**
- WORKS WITHIN THE EXISTING NATIONAL GRID SUBSTATION
  - WORKS WITHIN THE EXISTING NATIONAL GRID SUBSTATION LIMITS OF DEVIATION
- WORK No. 4**
- COOLING WATER CONNECTION WORKS
  - COOLING WATER CONNECTION WORKS LIMITS OF DEVIATION
- WORK No. 5**
- GROUNDWATER & TOWNS WATER SUPPLY CONNECTION WORKS
  - GROUNDWATER & TOWNS WATER SUPPLY CONNECTION WORKS LIMITS OF DEVIATION
- WORK No. 6**
- GAS SUPPLY PIPELINE CONNECTION WORKS
  - GAS SUPPLY PIPELINE CONNECTION WORKS LIMITS OF DEVIATION
- WORK No. 7**  
THE ABOVE GROUND INSTALLATION
- WORK No. 7A**
- COMPOUND FOR NATIONAL GRID'S APPARATUS
  - COMPOUND FOR NATIONAL GRID'S APPARATUS LIMITS OF DEVIATION
- WORK No. 7B**
- COMPOUND FOR THE UNDERTAKER'S APPARATUS
  - COMPOUND FOR THE UNDERTAKER'S APPARATUS LIMITS OF DEVIATION
- WORK No. 8**
- RETAINED LANDSCAPING
  - RETAINED LANDSCAPING LIMITS OF DEVIATION
- WORK No. 9**
- SURFACE WATER DRAINAGE CONNECTION TO HENSALL DYKE
  - SURFACE WATER DRAINAGE CONNECTION TO HENSALL DYKE LIMITS OF DEVIATION
- WORK No. 10**
- VEHICULAR, PEDESTRIAN AND CYCLE ACCESS WORKS AND RAIL INFRASTRUCTURE
  - VEHICULAR, PEDESTRIAN AND CYCLE ACCESS WORKS AND RAIL INFRASTRUCTURE LIMITS OF DEVIATION



ALL INFORMATION ON THIS DRAWING IS INDICATIVE ONLY, AND MAY BE SUBJECT TO FURTHER DESIGN DEVELOPMENT.

- DO NOT SCALE**
- NOTES**
1. REFER TO DRAWING 2095-059 SHEET 1.
  2. DRAINAGE VIA INFILTRATION WITHIN THE AGI SITE.
  3. COMPRISES OF OF A BURIED GAS AND COOLING WATER PIPES WHICH WILL NOT INTRODUCE ADDITIONAL IMPERMEABLE SURFACE OR AFFECT EXISTING LAND DRAINAGE.

- KEY**
- THE ORDER LIMITS
  - INDICATIVE SURFACE WATER PIPELINE DISCHARGE ROUTE TO HENSALL DYKE
  - INDICATIVE LOCATIONS OF SURFACE WATER ATTENUATION PONDS
  - SURFACE WATER FROM LAYDOWN AREA
  - SURFACE WATER FROM CCGT PLANT

R3	PRELIMINARY	AO	KMB	25.10.17
R2	PRELIMINARY	AO	KMB	24.10.17
R1	PRELIMINARY	AO	KMB	09.10.17
REV.	DETAILS OF REVISION	DRAWN	CHKD	DATE

**FICHTNER**  
CONSULTING ENGINEERS LIMITED

Kingsgate, Wellington Road North,  
Stockport, Cheshire, SK4 1LW, UK  
Tel: 0161 476 0032  
Website: www.fichtner.co.uk

CLIENT: **EGGBOROUGH POWER LIMITED**

SITE: **EGGBOROUGH**

PROJECT: **EGGBOROUGH DCO FOR CCGT PLANT**

TITLE: **WORK NUMBERS AND SURFACE WATER DRAINAGE SYSTEM**

DRAWING STATUS:	PRELIMINARY
DRAWN BY:	AO DATE: 25.10.17
CHECKED BY:	KMB DATE: 25.10.17
FILENAME:	2095-059-R3.dwg
OFFICE OF ISSUE:	STOCKPORT
SHEET SIZE:	A1 SCALE: 1:100000
DRAWING No.:	2095-059
REVISION:	R3

