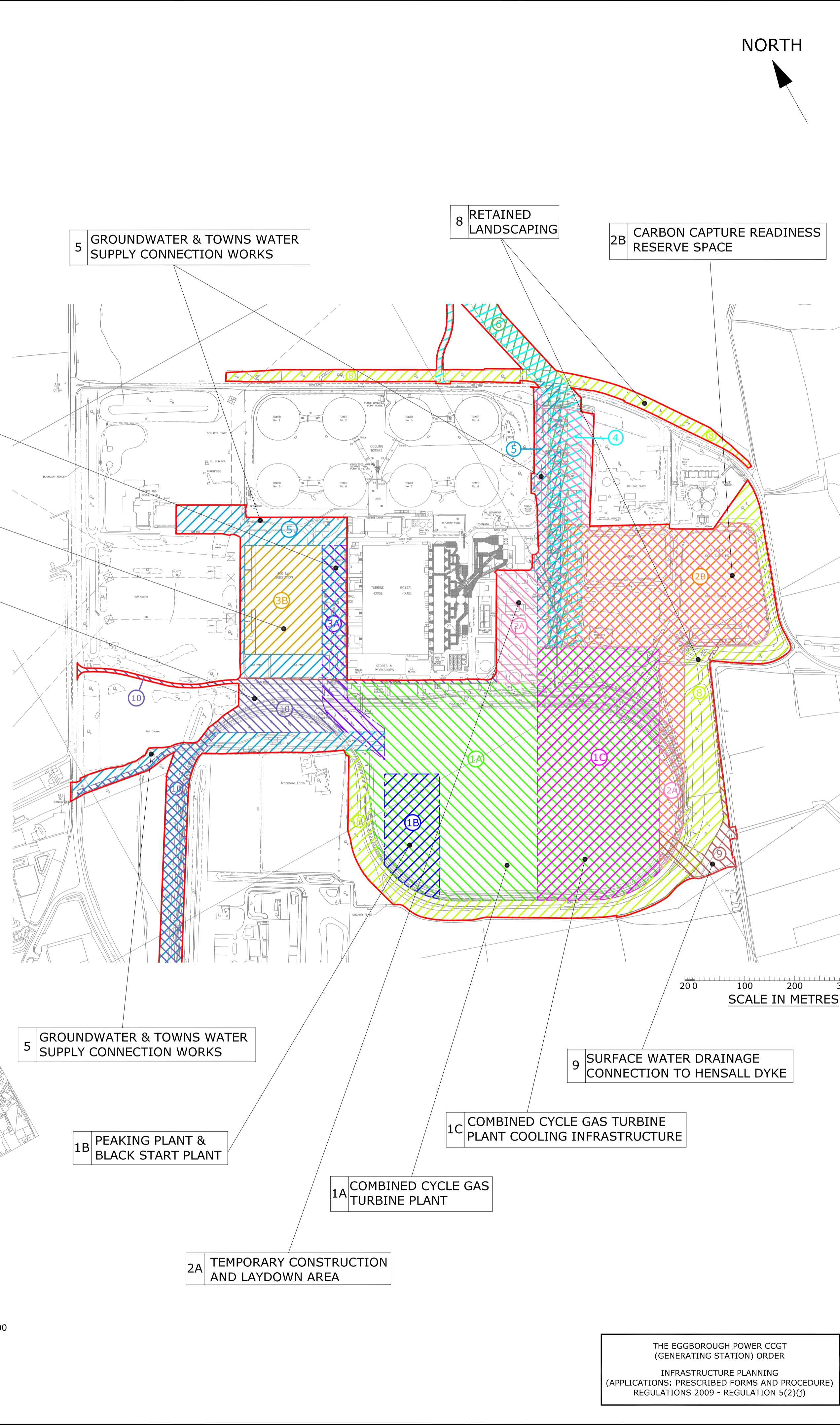
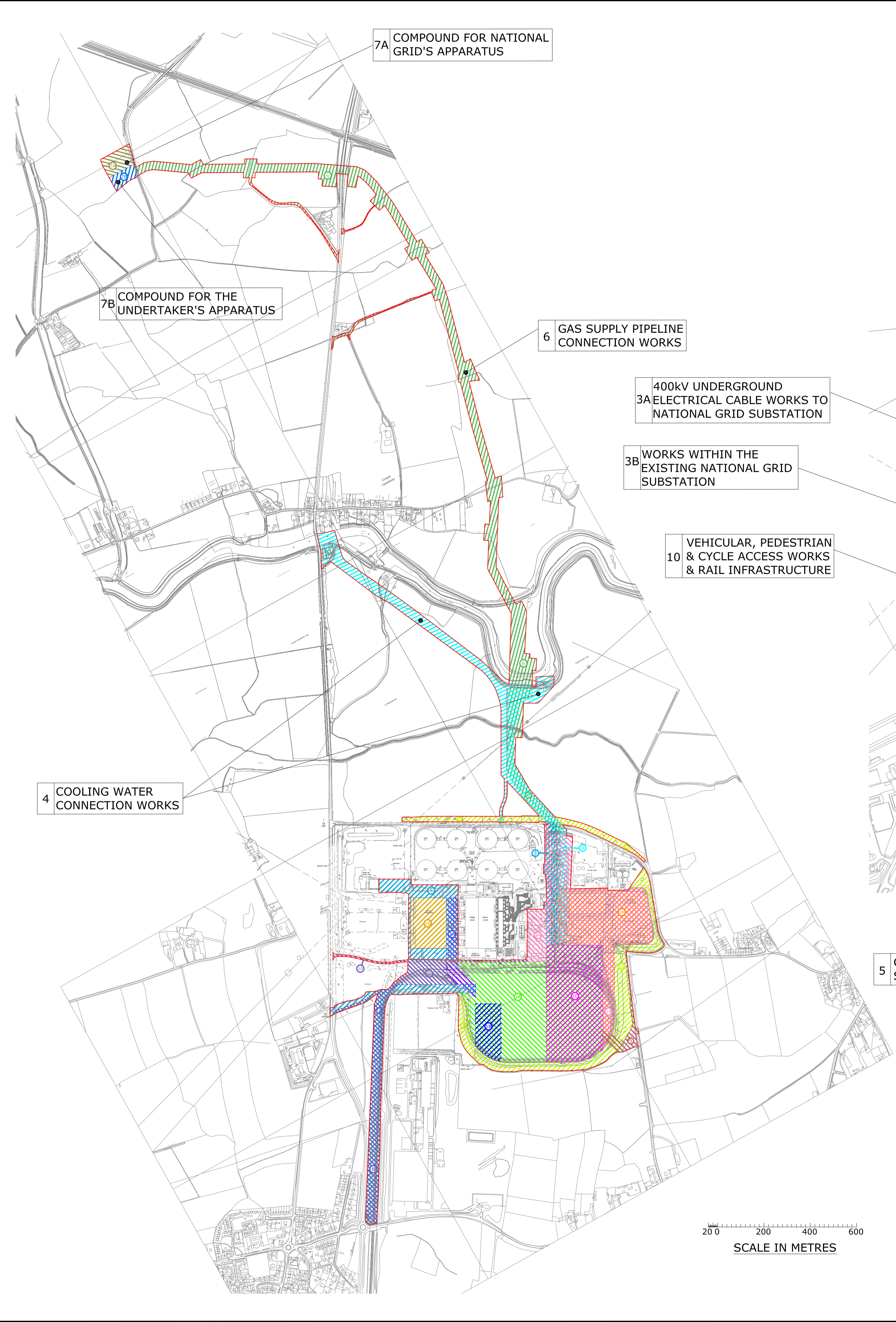
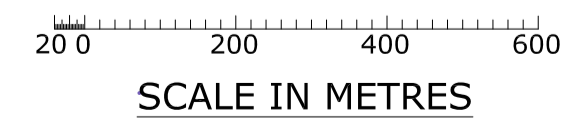
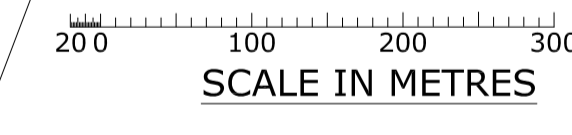


ALL INFORMATION ON THIS DRAWING IS INDICATIVE ONLY, AND MAY BE SUBJECT TO FURTHER DESIGN DEVELOPMENT.
DO NOT SCALE

- KEY**
- THE ORDER LIMITS
 - WORK No. 1**
THE ELECTRICITY GENERATING STATION
 - WORK No. 1A**
COMBINED CYCLE GAS TURBINE PLANT
COMBINED CYCLE GAS TURBINE PLANT LIMITS OF DEVIATION
 - WORK No. 1B**
PEAKING PLANT & BLACK START PLANT
PEAKING PLANT & BLACK START PLANT LIMITS OF DEVIATION
 - WORK No. 1C**
COMBINED CYCLE GAS TURBINE PLANT COOLING INFRASTRUCTURE
COMBINED CYCLE GAS TURBINE PLANT COOLING INFRASTRUCTURE LIMITS OF DEVIATION
 - WORK No. 2**
TEMPORARY CONSTRUCTION AND LAYDOWN AREA AND CARBON CAPTURE READINESS RESERVE SPACE
 - WORK No. 2A**
TEMPORARY CONSTRUCTION AND LAYDOWN AREA LIMITS OF DEVIATION
 - WORK No. 2B**
CARBON CAPTURE READINESS RESERVE SPACE
CARBON CAPTURE READINESS RESERVE SPACE LIMITS OF DEVIATION
 - WORK No. 3 - ELECTRICAL CONNECTION WORKS**
 - WORK No. 3A**
400kV UNDERGROUND ELECTRICAL CABLE WORKS TO NATIONAL GRID SUBSTATION
400kV UNDERGROUND ELECTRICAL CABLE WORKS TO NATIONAL GRID SUBSTATION LIMITS OF DEVIATION
 - WORK No. 3B**
WORKS WITHIN THE EXISTING NATIONAL GRID SUBSTATION
WORKS WITHIN THE EXISTING NATIONAL GRID SUBSTATION LIMITS OF DEVIATION
 - WORK No. 4**
COOLING WATER CONNECTION WORKS
COOLING WATER CONNECTION WORKS LIMITS OF DEVIATION
 - WORK No. 5**
GROUNDWATER & TOWNS WATER SUPPLY CONNECTION WORKS
GROUNDWATER & TOWNS WATER SUPPLY CONNECTION WORKS LIMITS OF DEVIATION
 - WORK No. 6**
GAS SUPPLY PIPELINE CONNECTION WORKS
GAS SUPPLY PIPELINE CONNECTION WORKS LIMITS OF DEVIATION
 - WORK No. 7**
THE ABOVE GROUND INSTALLATION
 - WORK No. 7A**
COMPOUND FOR NATIONAL GRID'S APPARATUS
COMPOUND FOR NATIONAL GRID'S APPARATUS LIMITS OF DEVIATION
 - WORK No. 7B**
COMPOUND FOR THE UNDERTAKER'S APPARATUS
COMPOUND FOR THE UNDERTAKER'S APPARATUS LIMITS OF DEVIATION
 - WORK No. 8**
RETAINED LANDSCAPING
RETAINED LANDSCAPING LIMITS OF DEVIATION
 - WORK No. 9**
SURFACE WATER DRAINAGE CONNECTION TO HENSALL DYKE
SURFACE WATER DRAINAGE CONNECTION TO HENSALL DYKE LIMITS OF DEVIATION
 - WORK No. 10**
VEHICULAR, PEDESTRIAN AND CYCLE ACCESS WORKS AND RAIL INFRASTRUCTURE
VEHICULAR, PEDESTRIAN AND CYCLE ACCESS WORKS AND RAIL INFRASTRUCTURE LIMITS OF DEVIATION



THE EGGBOROUGH POWER CCGT (GENERATING STATION) ORDER
INFRASTRUCTURE PLANNING
(APPLICATIONS: PRESCRIBED FORMS AND PROCEDURE)
REGULATIONS 2009 - REGULATION 5(2)(J))

R1	PRELIMINARY	AO	BC	18.05.17
REV.	DETAILS OF REVISION	DRAWN	CHKD	DATE

FICHTNER
CONSULTING ENGINEERS LIMITED
Kingsgate, Wellington Road North,
Stockport, Cheshire, SK4 1LW, UK
Tel: 0161 476 0032
Website: www.fichtner.co.uk

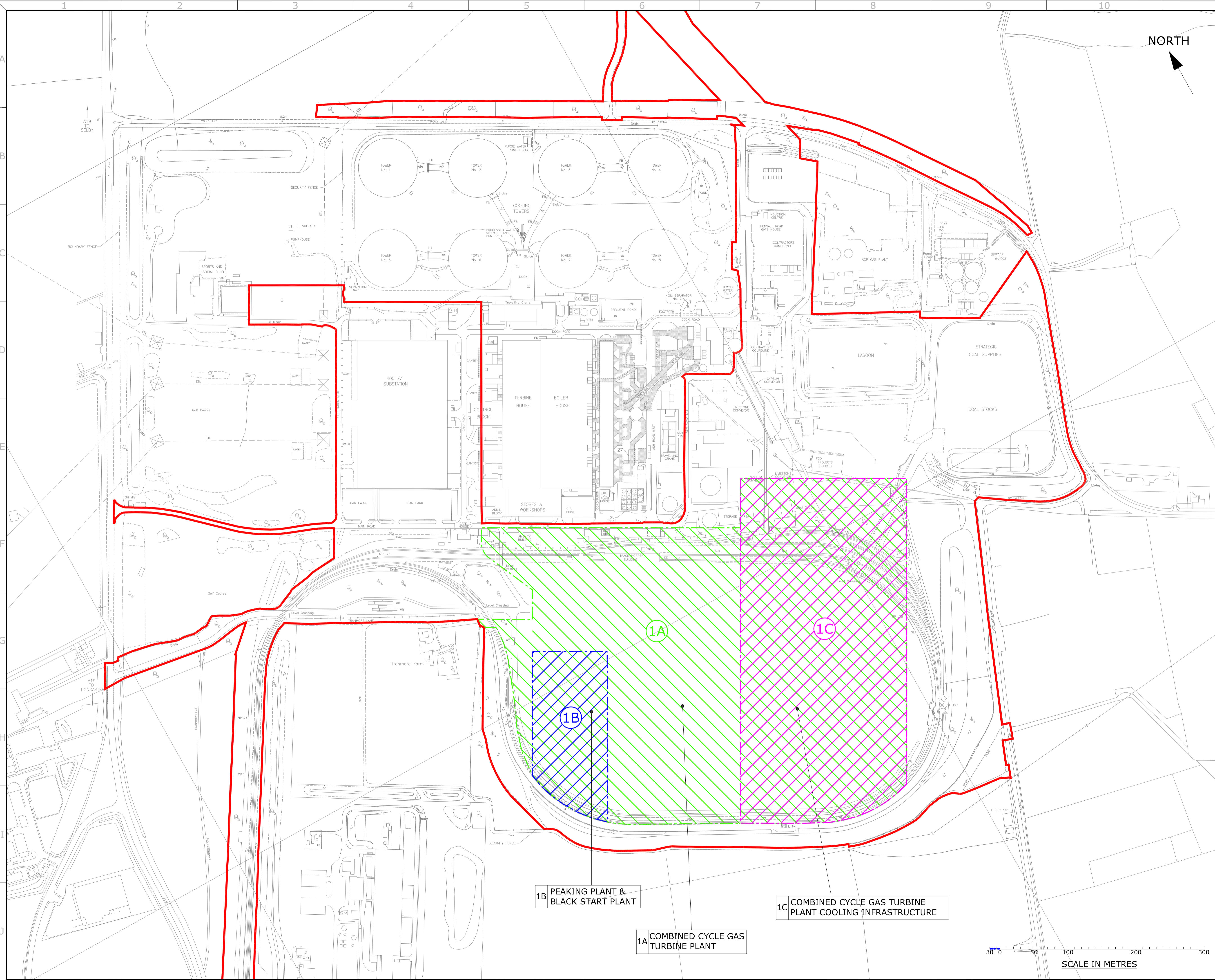
CLIENT: EGGBOROUGH POWER LIMITED
SITE: EGGBOROUGH
PROJECT: EGGBOROUGH DCO FOR CCGT PLANT
TITLE: APPLICATION DOCUMENT REFERENCE No. 4.4 WORKS PLAN

KEY PLAN			
DRAWING STATUS:	PRELIMINARY	DATE:	12.05.17
DRAWN BY:	AO	DATE:	12.05.17
CHECKED BY:	BC	DATE:	12.05.17
FILENAME:	2095-050-R1.DWG	OFFICE OF ISSUE:	STOCKPORT
SHEET SIZE:	A1	SCALE:	1:5000 & 1:100000
DRAWING No.:	2095-050	REVISION:	R1

ALL INFORMATION ON THIS DRAWING IS INDICATIVE ONLY, AND MAY BE SUBJECT TO FURTHER DESIGN DEVELOPMENT.
DO NOT SCALE

NORTH

- KEY**
- THE ORDER LIMITS
 - WORK No. 1**
THE ELECTRICITY GENERATING STATION
 - WORK No. 1A**
 - COMBINED CYCLE GAS TURBINE PLANT
 - COMBINED CYCLE GAS TURBINE PLANT LIMITS OF DEVIATION
 - WORK No. 1B**
 - PEAKING PLANT & BLACK START PLANT
 - PEAKING PLANT & BLACK START PLANT LIMITS OF DEVIATION
 - WORK No. 1C**
 - COMBINED CYCLE GAS TURBINE PLANT COOLING INFRASTRUCTURE
 - COMBINED CYCLE GAS TURBINE PLANT COOLING INFRASTRUCTURE LIMITS OF DEVIATION



1B PEAKING PLANT & BLACK START PLANT

1C COMBINED CYCLE GAS TURBINE PLANT COOLING INFRASTRUCTURE

1A COMBINED CYCLE GAS TURBINE PLANT

THE EGGBOROUGH POWER COGT (GENERATING STATION) ORDER
INFRASTRUCTURE PLANNING
(APPLICATIONS: PRESCRIBED FORMS AND PROCEDURE) REGULATIONS 2009 - REGULATION 5(2)(J))

R1	PRELIMINARY	AO	BC	18.05.17
REV.	DETAILS OF REVISION	DRAWN	CHKD	DATE

FICHTNER
CONSULTING ENGINEERS LIMITED
Kingsgate, Wellington Road North,
Stockport, Cheshire, SK4 1LW, UK
Tel: 0161 476 0032
Website: www.fichtner.co.uk

CLIENT: EGGBOROUGH POWER LIMITED
SITE: EGGBOROUGH
PROJECT: EGGBOROUGH DCO FOR CCGT PLANT
TITLE: APPLICATION DOCUMENT REFERENCE No. 4.4 WORKS PLAN

SHEET 1 of 9 - WORK No. 1 THE ELECTRICITY GENERATING STATION

DRAWING STATUS:	PRELIMINARY
DRAWN BY:	AO DATE: 12.05.17
CHECKED BY:	BC DATE: 12.05.17
FILENAME:	2095-050-R1.DWG
OFFICE OF ISSUE:	STOCKPORT
SHEET SIZE:	A1 SCALE: 1:2500
DRAWING No.:	2095-050
REVISION:	R1

0 50 100 200 300
SCALE IN METRES

ALL INFORMATION ON THIS DRAWING IS INDICATIVE ONLY, AND MAY BE SUBJECT TO FURTHER DESIGN DEVELOPMENT.
DO NOT SCALE

- KEY**
- THE ORDER LIMITS
 - WORK No. 2**
TEMPORARY CONSTRUCTION AND LAYDOWN AREA AND CARBON CAPTURE READINESS RESERVE SPACE
 - WORK No. 2A**
 - TEMPORARY CONSTRUCTION AND LAYDOWN AREA
 - TEMPORARY CONSTRUCTION AND LAYDOWN AREA LIMITS OF DEVIATION
 - WORK No. 2B**
 - CARBON CAPTURE READINESS RESERVE SPACE
 - CARBON CAPTURE READINESS RESERVE SPACE LIMITS OF DEVIATION

NORTH

2A TEMPORARY CONSTRUCTION AND LAYDOWN AREA

2B CARBON CAPTURE READINESS RESERVE SPACE

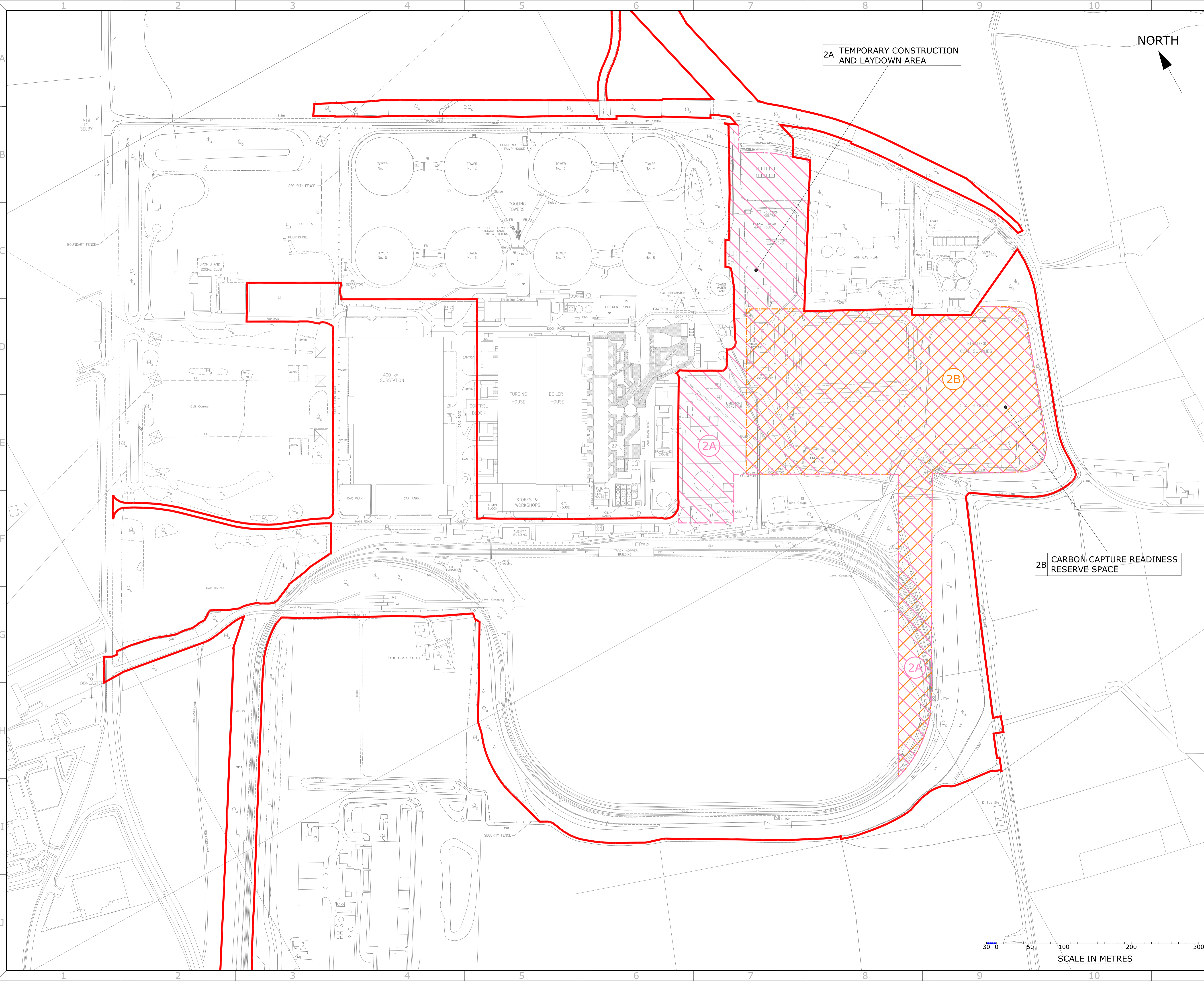
THE EGBOROUGH POWER COGT (GENERATING STATION) ORDER
INFRASTRUCTURE PLANNING
(APPLICATIONS: PRESCRIBED FORMS AND PROCEDURE) REGULATIONS 2009 - REGULATION 5(2)(J))

R1	PRELIMINARY	AO	BC	18.05.17
REV.	DETAILS OF REVISION	DRAWN	CHKD	DATE

FICHTNER
CONSULTING ENGINEERS LIMITED
Kingsgate, Wellington Road North,
Stockport, Cheshire, SK4 1LW, UK
Tel: 0161 476 0032
Website: www.fichtner.co.uk

CLIENT: **EGGBOROUGH POWER LIMITED**
SITE: **EGGBOROUGH**
PROJECT: **EGGBOROUGH DCO FOR CCGT PLANT**
TITLE: **APPLICATION DOCUMENT REFERENCE No. 4.4 WORKS PLAN**
SHEET 2 of 9 - WORK No.2 TEMPORARY CONSTRUCTION AND LAYDOWN AREA AND CARBON CAPTURE READINESS RESERVE SPACE

DRAWING STATUS:	PRELIMINARY
DRAWN BY:	AO DATE: 12.05.17
CHECKED BY:	BC DATE: 12.05.17
FILENAME:	2095-050-R1.DWG
OFFICE OF ISSUE:	STOCKPORT
SHEET SIZE:	A1 SCALE: 1:2500
DRAWING No.:	2095-050
REVISION:	R1



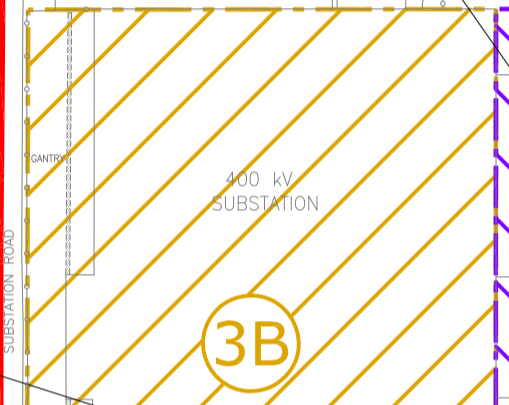
ALL INFORMATION ON THIS DRAWING IS INDICATIVE ONLY, AND MAY BE SUBJECT TO FURTHER DESIGN DEVELOPMENT.
DO NOT SCALE



- KEY**
- THE ORDER LIMITS
 - WORK No. 3 - ELECTRICAL CONNECTION WORKS**
 - WORK No. 3A**
 - 400kV UNDERGROUND ELECTRICAL CABLE WORKS TO NATIONAL GRID SUBSTATION
 - 400kV UNDERGROUND ELECTRICAL CABLE WORKS TO NATIONAL GRID SUBSTATION LIMITS OF DEVIATION
 - WORK No. 3B**
 - WORKS WITHIN THE EXISTING NATIONAL GRID SUBSTATION
 - WORKS WITHIN THE EXISTING NATIONAL GRID SUBSTATION LIMITS OF DEVIATION

**400kV UNDERGROUND ELECTRICAL
3A CABLE WORKS TO NATIONAL GRID
SUBSTATION**

**3B WORKS WITHIN THE EXISTING
NATIONAL GRID SUBSTATION**



THE EGGBOROUGH POWER CCGT
(GENERATING STATION) ORDER
INFRASTRUCTURE PLANNING
(APPLICATIONS: PRESCRIBED FORMS AND PROCEDURE)
REGULATIONS 2009 - REGULATION 5(2)(J))

R1	PRELIMINARY	AO	BC	18.05.17
REV.	DETAILS OF REVISION	DRAWN	CHKD	DATE

FICHTNER
CONSULTING ENGINEERS LIMITED
Kingsgate, Wellington Road North,
Stockport, Cheshire, SK4 1LW, UK
Tel: 0161 476 0032
Website: www.fichtner.co.uk

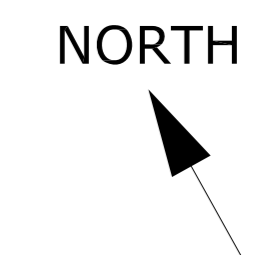
CLIENT: EGGBOROUGH POWER LIMITED
SITE: EGGBOROUGH
PROJECT: EGGBOROUGH DCO FOR CCGT PLANT
TITLE: APPLICATION DOCUMENT REFERENCE No. 4.4 WORKS PLAN

SHEET 3 of 9 - WORK No. 3
ELECTRICAL CONNECTION WORKS

DRAWING STATUS:	PRELIMINARY
DRAWN BY:	AO DATE: 12.05.17
CHECKED BY:	BC DATE: 12.05.17
FILENAME:	2095-050-R1.DWG
OFFICE OF ISSUE:	STOCKPORT
SHEET SIZE:	A1 SCALE: 1:2500
DRAWING No.:	2095-050
REVISION:	R1



ALL INFORMATION ON THIS DRAWING IS INDICATIVE ONLY AND MAY BE SUBJECT TO FURTHER DESIGN DEVELOPMENT.
DO NOT SCALE



- KEY**
- THE ORDER LIMITS
 - COOLING WATER CONNECTION WORKS
 - COOLING WATER CONNECTION WORKS LIMITS OF DEVIATION

WORK No. 4

4 COOLING WATER CONNECTION WORKS

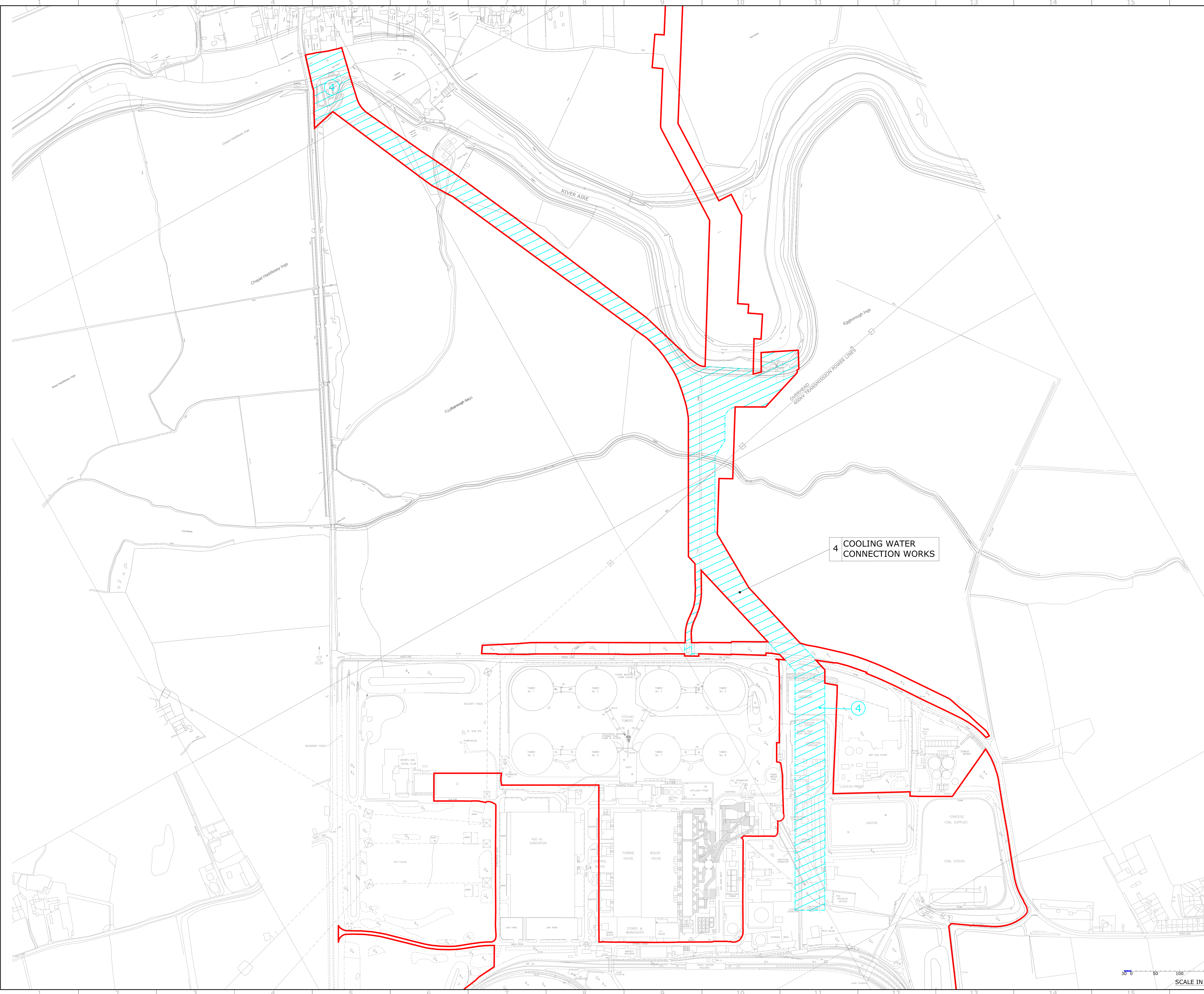
THE EGGBOROUGH POWER CCGT (GENERATING STATION) ORDER
INFRASTRUCTURE PLANNING
(APPLICATIONS: PRESCRIBED FORMS AND PROCEDURE) REGULATIONS 2009 - REGULATION 5(2)(J)

REV.	DESCRIPTION	DATE
R1	PRELIMINARY	18.05.17
AD	BC	



CLIENT: EGGBOROUGH POWER LIMITED
SITE: EGGBOROUGH
PROJECT: EGGBOROUGH DCO FOR CCGT PLANT
TITLE: APPLICATION DOCUMENT REFERENCE No. 4.4 WORKS PLAN

DRAWING STATUS: PRELIMINARY	
DRAWN BY: AD	DATE: 12.05.17
CHECKED BY: BC	DATE: 12.05.17
FILENAME: 2095-050-R1.DWG	
OFFICE OF ISSUE: STOCKPORT	
SHEET SIZE: A0	SCALE: 1:2500
DRAWING No: 2095-050	REVISION: R1



5 GROUNDWATER & TOWNS WATER SUPPLY CONNECTION WORKS

NORTH

ALL INFORMATION ON THIS DRAWING IS INDICATIVE ONLY AND MAY BE SUBJECT TO FURTHER DESIGN DEVELOPMENT. DO NOT SCALE

- KEY**
- THE ORDER LIMITS
 - GROUNDWATER & TOWNS WATER SUPPLY CONNECTION WORKS
 - GROUNDWATER & TOWNS WATER SUPPLY CONNECTION WORKS LIMITS OF DEVIATION

THE EGGBOROUGH POWER CCGT (GENERATING STATION) ORDER
 INFRASTRUCTURE PLANNING
 (APPLICATIONS: PRESCRIBED FORMS AND PROCEDURE) REGULATIONS 2009 - REGULATION 5(2)(J)

REV.	DESCRIPTION	BY	DATE
R1	PRELIMINARY	AO	18.05.17
	DETAILS OF REVISION	DRAWN/CHKD	DATE

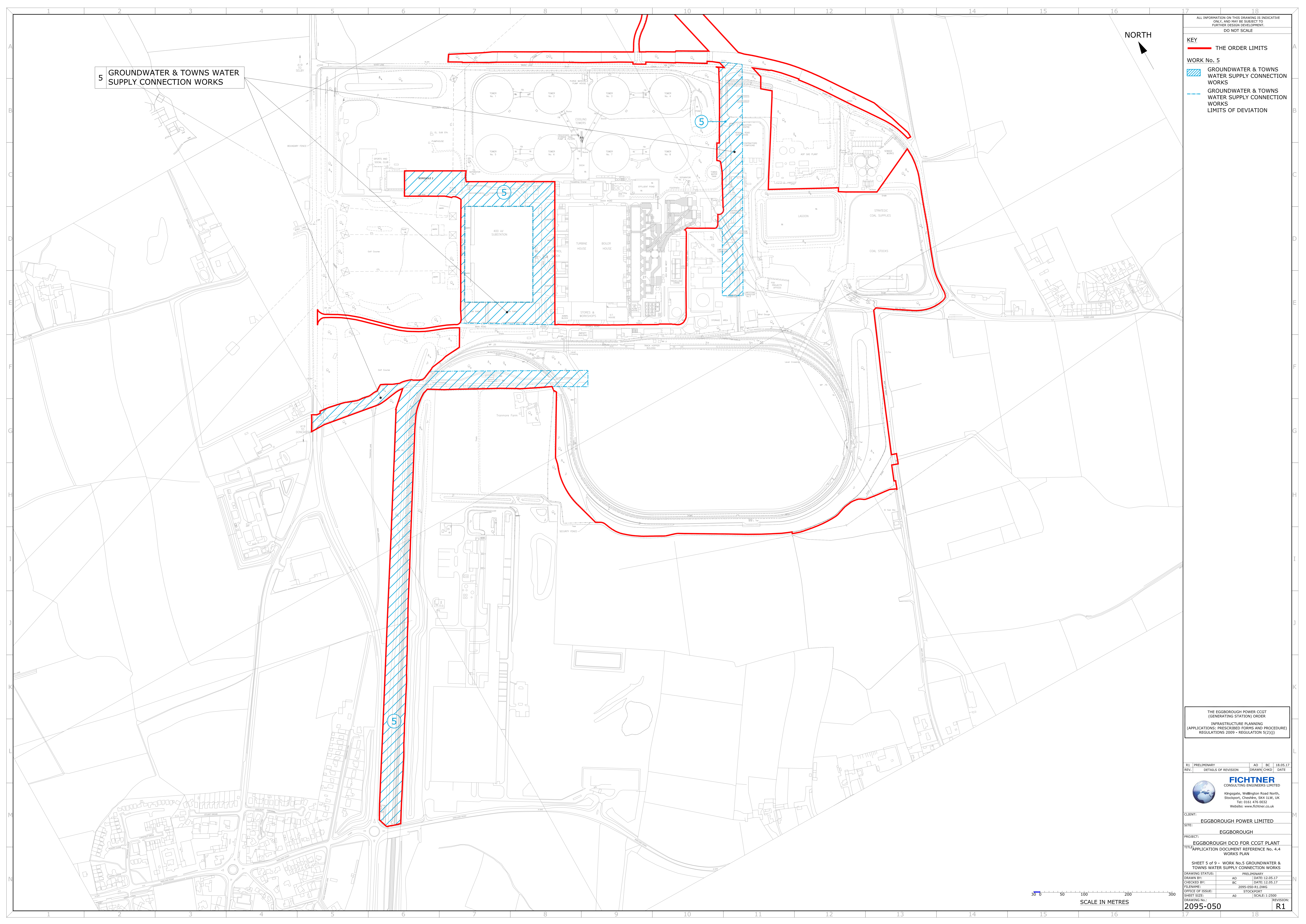
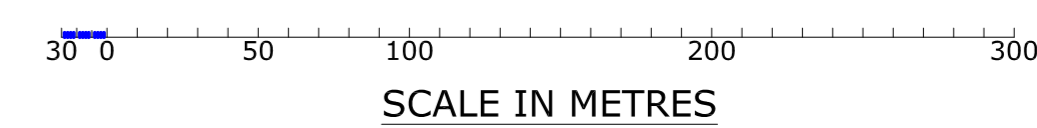
FICHTNER
 CONSULTING ENGINEERS LIMITED
 Kingsgate, Wellington Road North,
 Stockport, Cheshire, SK4 1LW, UK
 Tel: 0161 476 0032
 Website: www.fichtner.co.uk

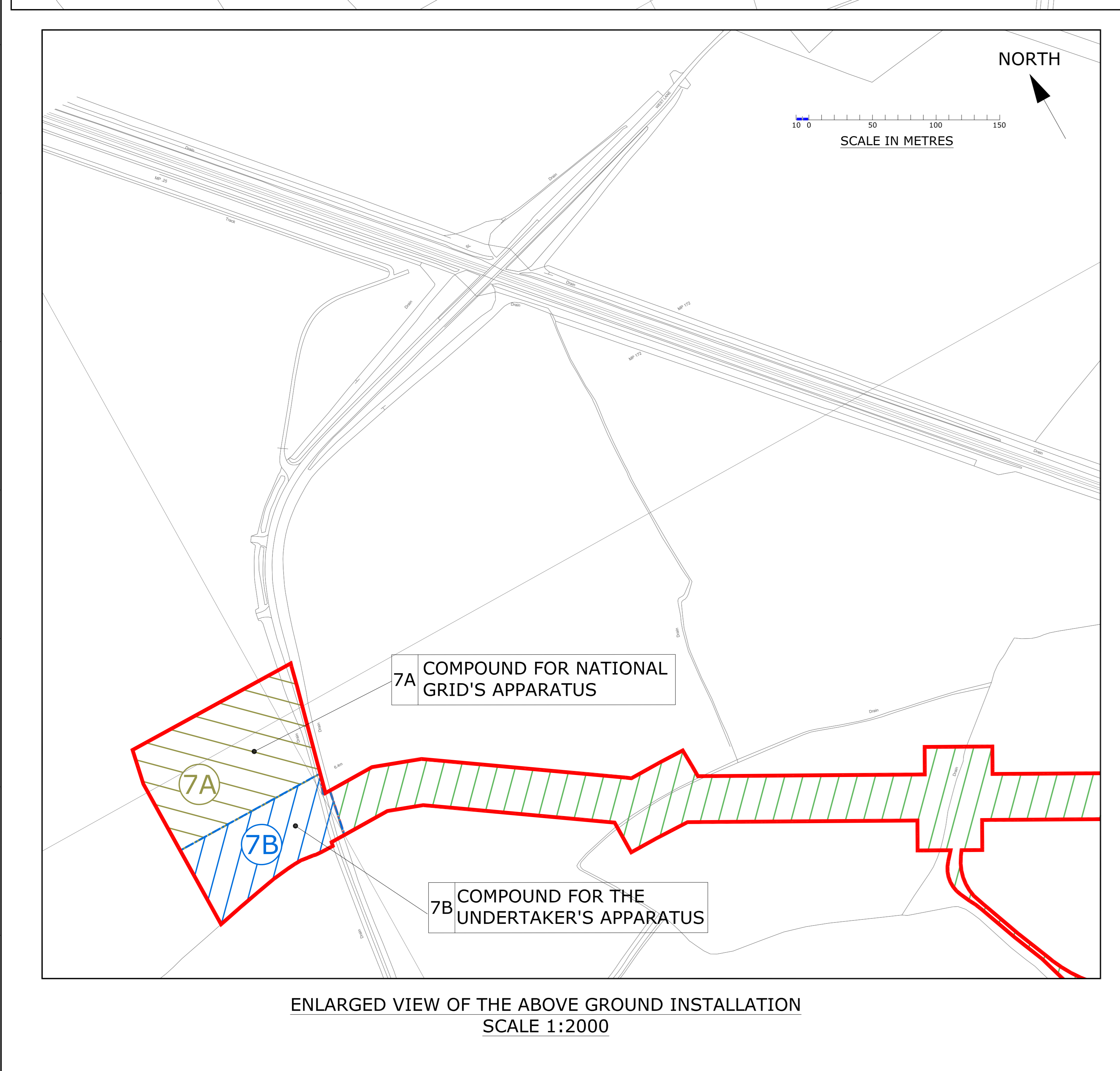
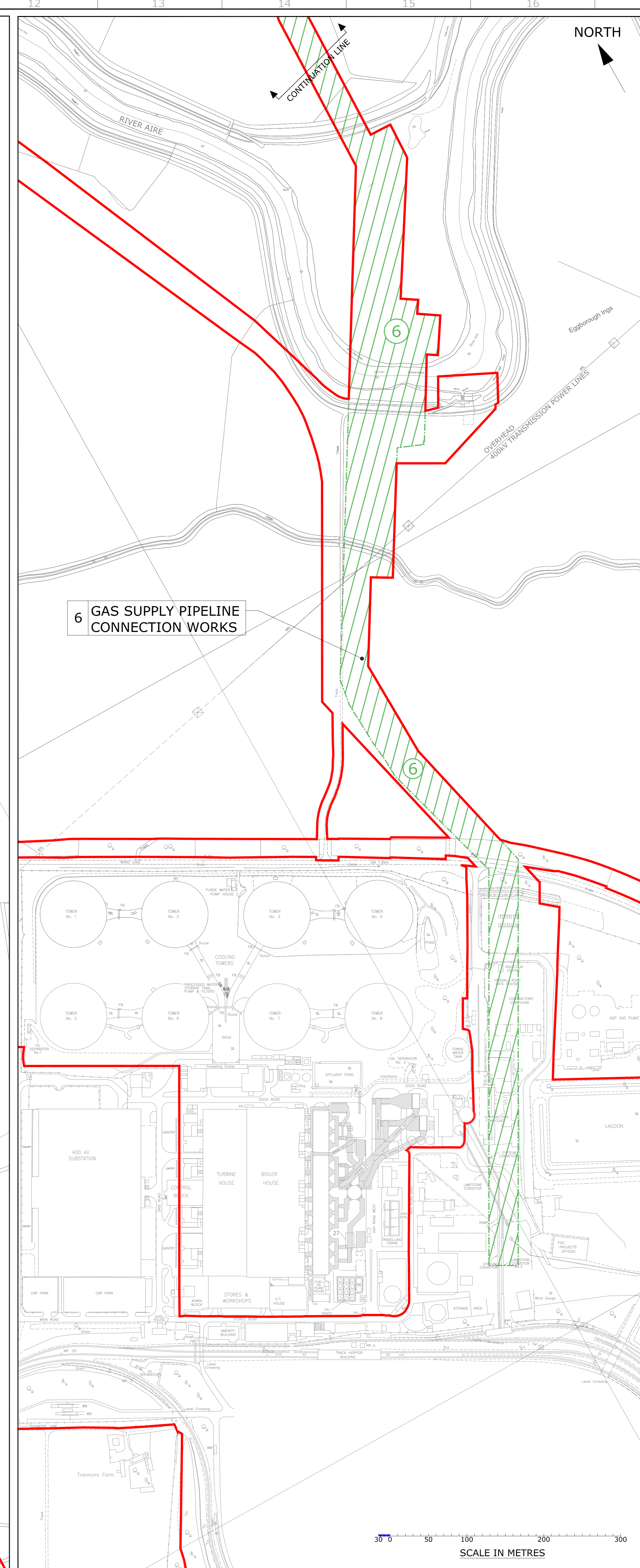
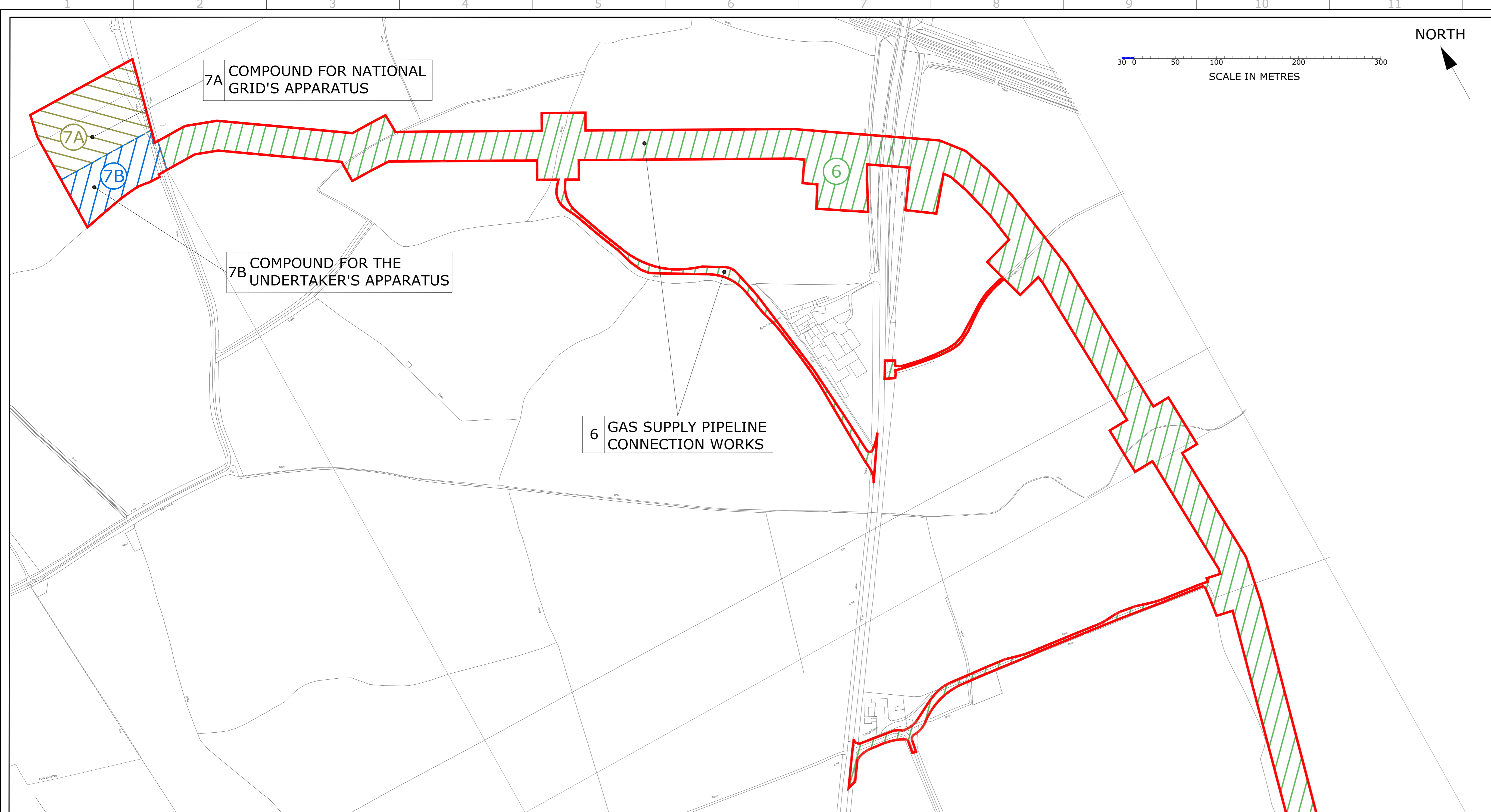
CLIENT: EGGBOROUGH POWER LIMITED
 SITE: EGGBOROUGH

PROJECT: EGGBOROUGH DCO FOR CCGT PLANT
 TITLE: APPLICATION DOCUMENT REFERENCE No. 4.4 WORKS PLAN

SHEET 5 of 9 - WORK No.5 GROUNDWATER & TOWNS WATER SUPPLY CONNECTION WORKS

DRAWING STATUS:	PRELIMINARY
DRAWN BY:	AO
CHECKED BY:	BC
FILENAME:	2095-050-R1.DWG
OFFICE OF ISSUE:	STOCKPORT
SHEET SIZE:	A0
DRAWING No.:	2095-050
SCALE:	1:2500
REVISION:	R1





ALL INFORMATION ON THIS DRAWING IS INDICATIVE ONLY AND MAY BE SUBJECT TO FURTHER DESIGN DEVELOPMENT. DO NOT SCALE.

KEY

- THE ORDER LIMITS
- WORK No. 6
 - GAS SUPPLY PIPELINE CONNECTION WORKS
 - GAS SUPPLY PIPELINE CONNECTION WORKS LIMITS OF DEVIATION
- WORK No. 7 THE ABOVE GROUND INSTALLATION
 - WORK No. 7A
 - COMPOUND FOR NATIONAL GRID'S APPARATUS
 - COMPOUND FOR NATIONAL GRID'S APPARATUS LIMITS OF DEVIATION
 - WORK No. 7B
 - COMPOUND FOR THE UNDERTAKER'S APPARATUS
 - COMPOUND FOR THE UNDERTAKER'S APPARATUS LIMITS OF DEVIATION

THE EGGBOROUGH POWER CCGT (GENERATING STATION) ORDER

INFRASTRUCTURE PLANNING (APPLICATIONS, PRESCRIBED FORMS AND PROCEDURE) REGULATIONS 2009 - REGULATION 5(2)(J)

RI	PRELIMINARY	AD	BC	18.05.17
REV.	DETAILS OF REVISION	DRAWN	CHKD	DATE

FICTNER
CONSULTING ENGINEERS LIMITED

Kingsgate, Wellington Road North,
Stockport, Cheshire, SK11 1LW, UK
Tel: 0161 476 0032
Website: www.fictner.co.uk

CLIENT: EGGBOROUGH POWER LIMITED

SITE: EGGBOROUGH

PROJECT: EGGBOROUGH DCO FOR CCGT PLANT
TITLE: APPLICATION DOCUMENT REFERENCE No. 4.4
WORKS PLAN

SHEET 6 of 9 - WORKS No. 6 & No. 7 GAS SUPPLY PIPELINE CONNECTION WORKS AND THE ABOVE GROUND INSTALLATION

DRAWN BY:	AO	DATE:	12.05.17
CHECKED BY:	BC	DATE:	12.05.17
FILE NAME:	2095-050-R1.DWG		
OFFICE OF ISSUE:	STOCKPORT		
SHEET SIZE:	A0	SCALE:	1:2000
DRAWING No.:	2095-050	REVISION:	R1

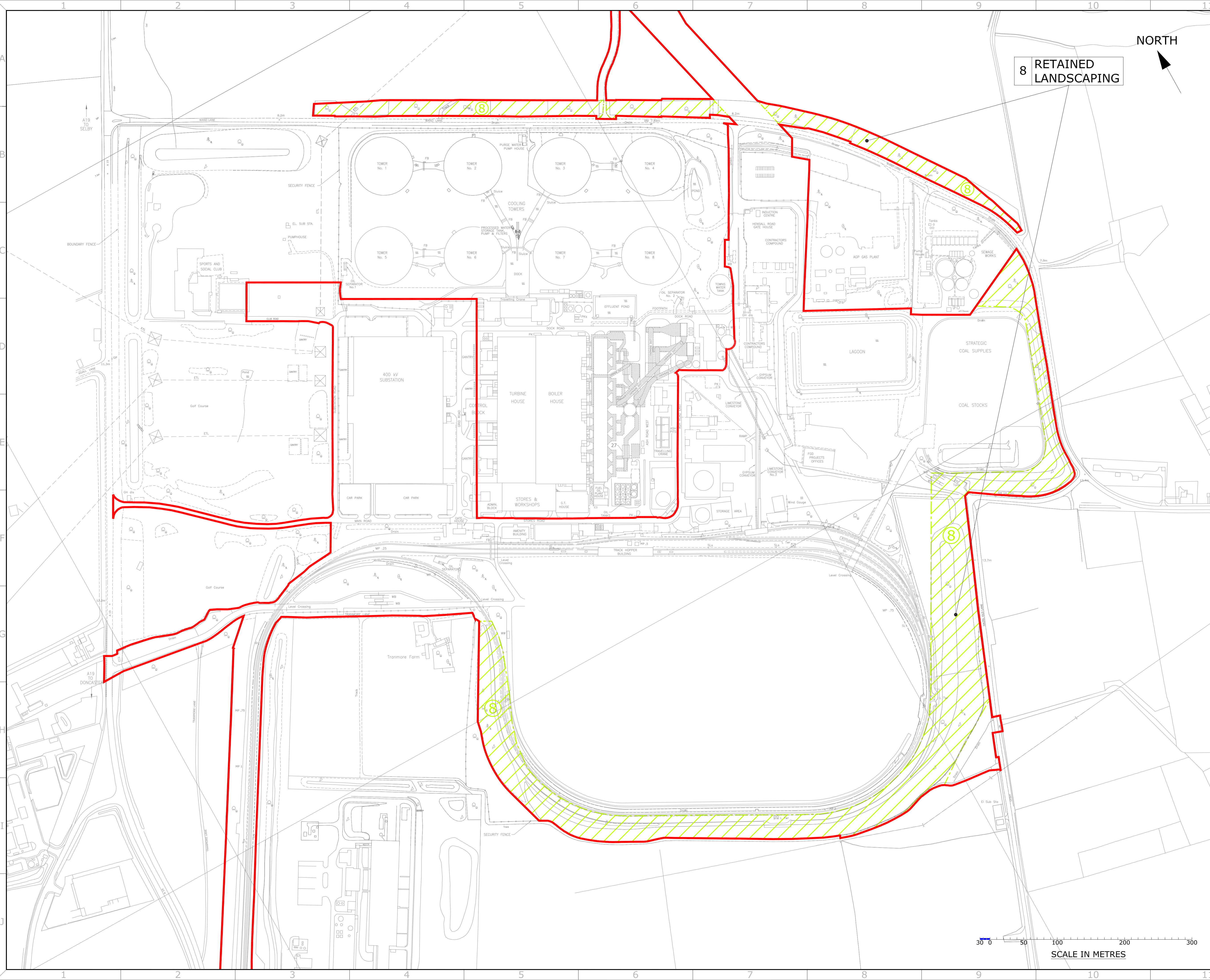
ALL INFORMATION ON THIS DRAWING IS INDICATIVE ONLY, AND MAY BE SUBJECT TO FURTHER DESIGN DEVELOPMENT.
DO NOT SCALE

KEY

- THE ORDER LIMITS
- ▨ WORK No.8
RETAINED LANDSCAPING
- RETAINED LANDSCAPING LIMITS OF DEVIATION

8 RETAINED LANDSCAPING

NORTH



THE EGGBOROUGH POWER COGT (GENERATING STATION) ORDER
INFRASTRUCTURE PLANNING
(APPLICATIONS: PRESCRIBED FORMS AND PROCEDURE)
REGULATIONS 2009 - REGULATION 5(2)(J))

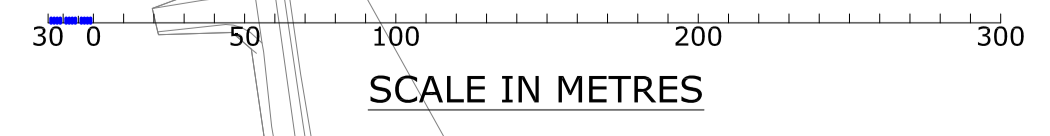
R1	PRELIMINARY	AO	BC	18.05.17
REV.	DETAILS OF REVISION	DRAWN	CHKD	DATE

FICHTNER
CONSULTING ENGINEERS LIMITED
Kingsgate, Wellington Road North,
Stockport, Cheshire, SK4 1LW, UK
Tel: 0161 476 0032
Website: www.fichtner.co.uk

CLIENT: EGGBOROUGH POWER LIMITED
SITE: EGGBOROUGH
PROJECT: EGGBOROUGH DCO FOR CCGT PLANT
TITLE: APPLICATION DOCUMENT REFERENCE No.4.4 WORKS PLAN

SHEET 7 of 9 - WORK No.8 RETAINED LANDSCAPING

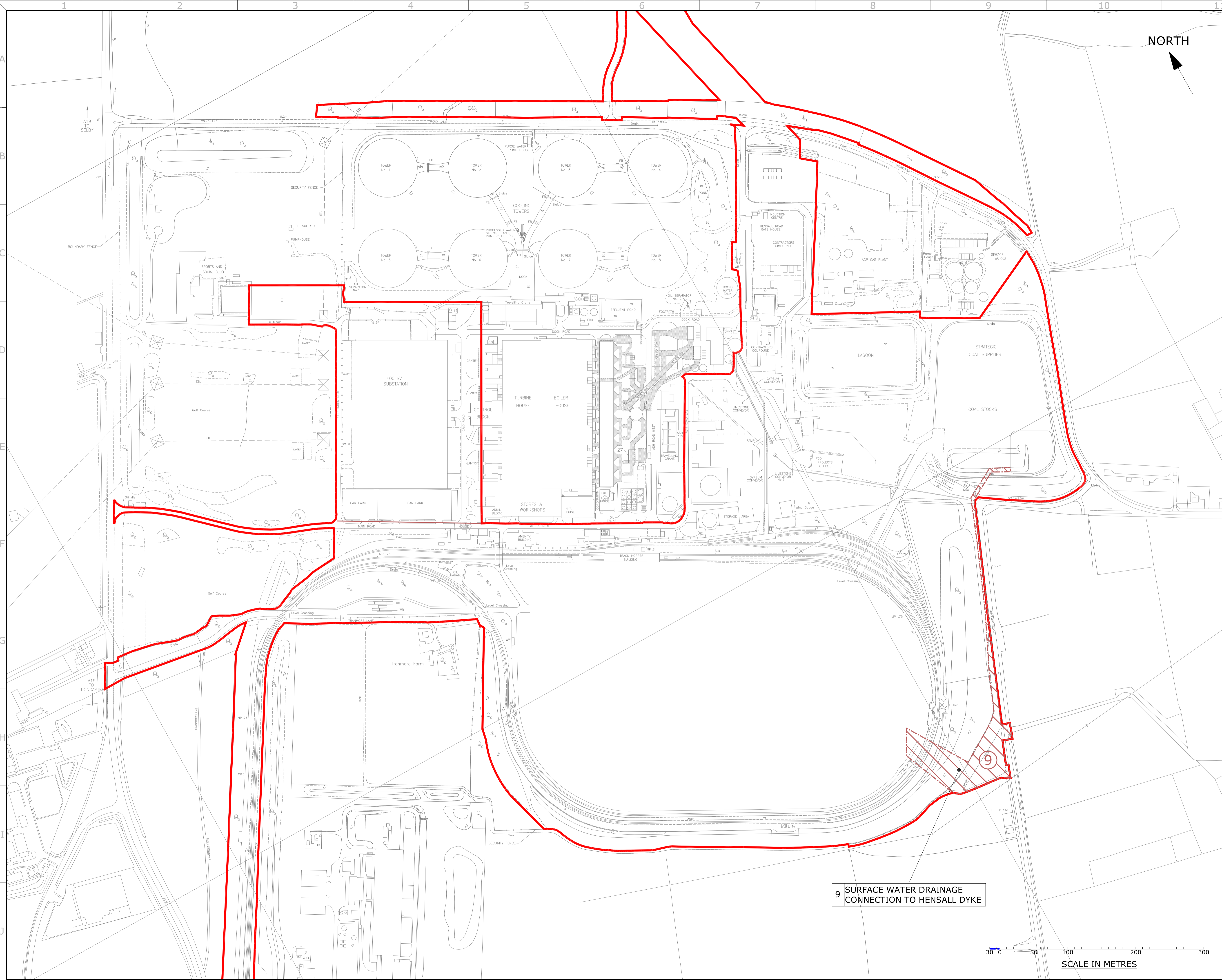
DRAWING STATUS:	PRELIMINARY
DRAWN BY:	AO DATE: 12.05.17
CHECKED BY:	BC DATE: 12.05.17
FILENAME:	2095-050-R1.DWG
OFFICE OF ISSUE:	STOCKPORT
SHEET SIZE:	A1 SCALE: 1:2500
DRAWING No.:	2095-050
REVISION:	R1



ALL INFORMATION ON THIS DRAWING IS INDICATIVE ONLY, AND MAY BE SUBJECT TO FURTHER DESIGN DEVELOPMENT.
DO NOT SCALE

- KEY**
- THE ORDER LIMITS
 - SURFACE WATER DRAINAGE CONNECTION TO HENSALL DYKE
 - SURFACE WATER DRAINAGE CONNECTION TO HENSALL DYKE
 - LIMITS OF DEVIATION

NORTH



9 SURFACE WATER DRAINAGE CONNECTION TO HENSALL DYKE

THE EGGBOROUGH POWER COGT (GENERATING STATION) ORDER
INFRASTRUCTURE PLANNING
(APPLICATIONS: PRESCRIBED FORMS AND PROCEDURE)
REGULATIONS 2009 - REGULATION 5(2)(J))

R1	PRELIMINARY	AO	BC	18.05.17
REV.	DETAILS OF REVISION	DRAWN	CHKD	DATE

FICHTNER
CONSULTING ENGINEERS LIMITED
Kingsgate, Wellington Road North,
Stockport, Cheshire, SK4 1LW, UK
Tel: 0161 476 0032
Website: www.fichtner.co.uk

CLIENT: EGGBOROUGH POWER LIMITED
SITE: EGGBOROUGH
PROJECT: EGGBOROUGH DCO FOR CCGT PLANT
TITLE: APPLICATION DOCUMENT REFERENCE No. 4.4 WORKS PLAN

SHEET 8 of 9 - WORK No.9 SURFACE WATER DRAINAGE CONNECTION TO HENSALL DYKE

DRAWING STATUS:	PRELIMINARY
DRAWN BY:	AO DATE: 12.05.17
CHECKED BY:	BC DATE: 12.05.17
FILENAME:	2095-050-R1.DWG
OFFICE OF ISSUE:	STOCKPORT
SHEET SIZE:	A1 SCALE: 1:2500
DRAWING No.:	2095-050
REVISION:	R1

0 50 100 200 300
SCALE IN METRES

ALL INFORMATION ON THIS DRAWING IS INDICATIVE ONLY, AND MAY BE SUBJECT TO FURTHER DESIGN DEVELOPMENT.
DO NOT SCALE

- KEY**
- THE ORDER LIMITS
 - ▨ WORK No. 10
VEHICULAR, PEDESTRIAN AND CYCLE ACCESS WORKS AND RAIL INFRASTRUCTURE
 - VEHICULAR, PEDESTRIAN AND CYCLE ACCESS WORKS AND RAIL INFRASTRUCTURE LIMITS OF DEVIATION

NORTH

VEHICULAR, PEDESTRIAN
10 & CYCLE ACCESS WORKS
& RAIL INFRASTRUCTURE

THE EGGBOROUGH POWER COGT
(GENERATING STATION) ORDER
INFRASTRUCTURE PLANNING
(APPLICATIONS: PRESCRIBED FORMS AND PROCEDURE)
REGULATIONS 2009 - REGULATION 5(2)(J))

R1	PRELIMINARY	AO	BC	18.05.17
REV.	DETAILS OF REVISION	DRAWN	CHKD	DATE

FICHTNER
CONSULTING ENGINEERS LIMITED
Kingsgate, Wellington Road North,
Stockport, Cheshire, SK4 1LW, UK
Tel: 0161 476 0032
Website: www.fichtner.co.uk

CLIENT: EGGBOROUGH POWER LIMITED
SITE: EGGBOROUGH
PROJECT: EGGBOROUGH
TITLE: EGGBOROUGH DCO FOR CCGT PLANT
APPLICATION DOCUMENT REFERENCE No. 4.4
WORKS PLAN
SHEET 9 of 9 - WORK No. 10
VEHICULAR, PEDESTRIAN & CYCLE ACCESS WORKS & RAIL INFRASTRUCTURE

DRAWING STATUS:	PRELIMINARY
DRAWN BY:	AO DATE: 12.05.17
CHECKED BY:	BC DATE: 12.05.17
FILENAME:	2095-050-R1.DWG
OFFICE OF ISSUE:	STOCKPORT
SHEET SIZE:	A1 SCALE: 1:2500
DRAWING No.:	2095-050
REVISION:	R1

